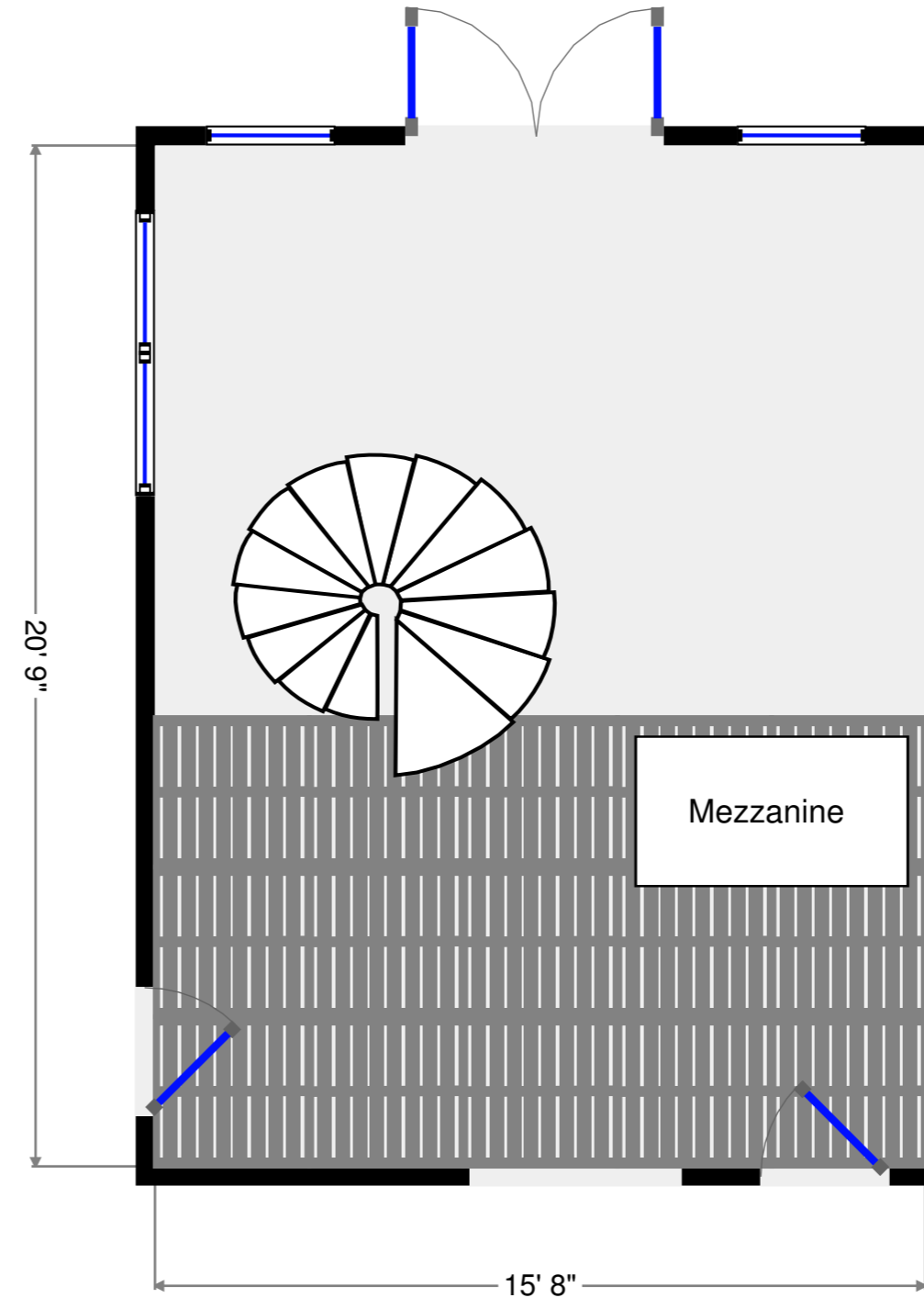
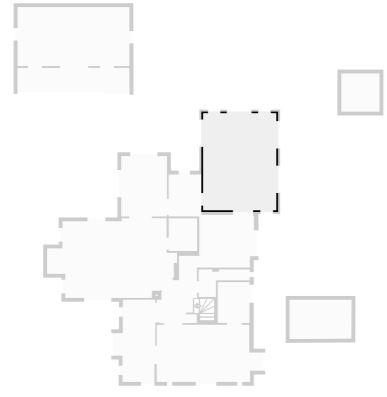


Lockstones
malmesbury@lockstones.co.uk
01666 338633
2016-05-23

3768 sq ft

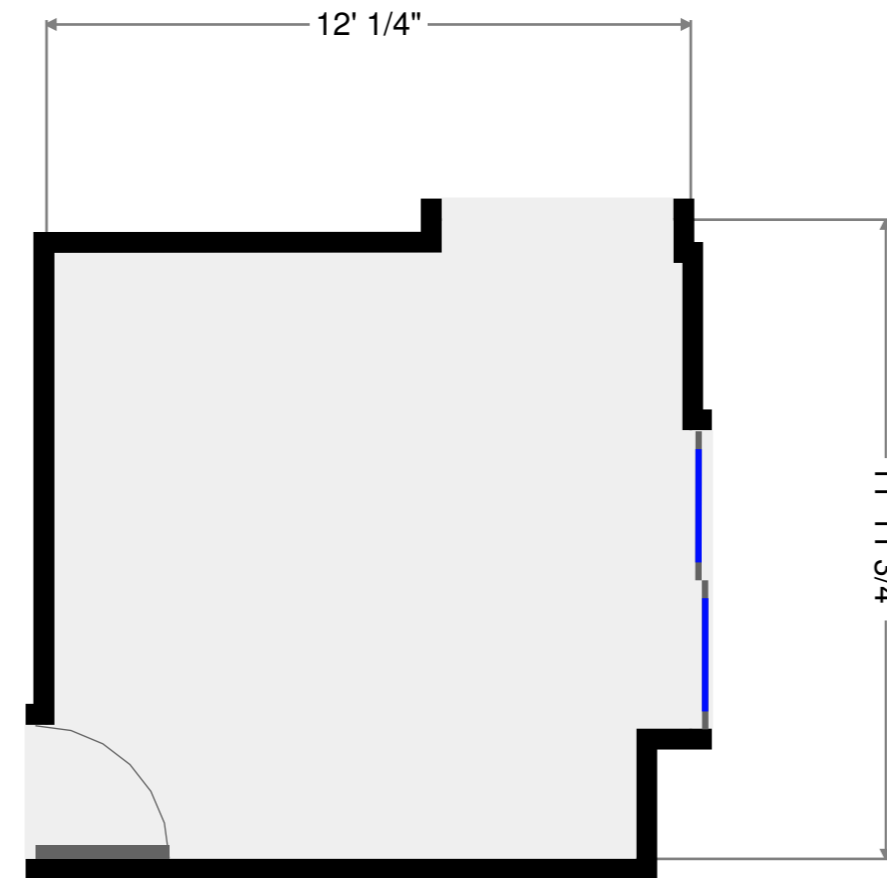
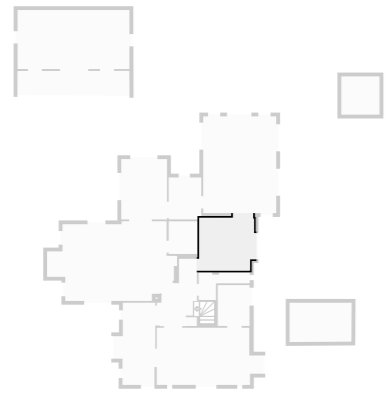
Day room

Width: 15' 8"
 Length: 20' 9"
 Area: 324.97 sq ft
 Perimeter: 72' 9 3/4"
 Ceiling Height: 8' 3 1/2"



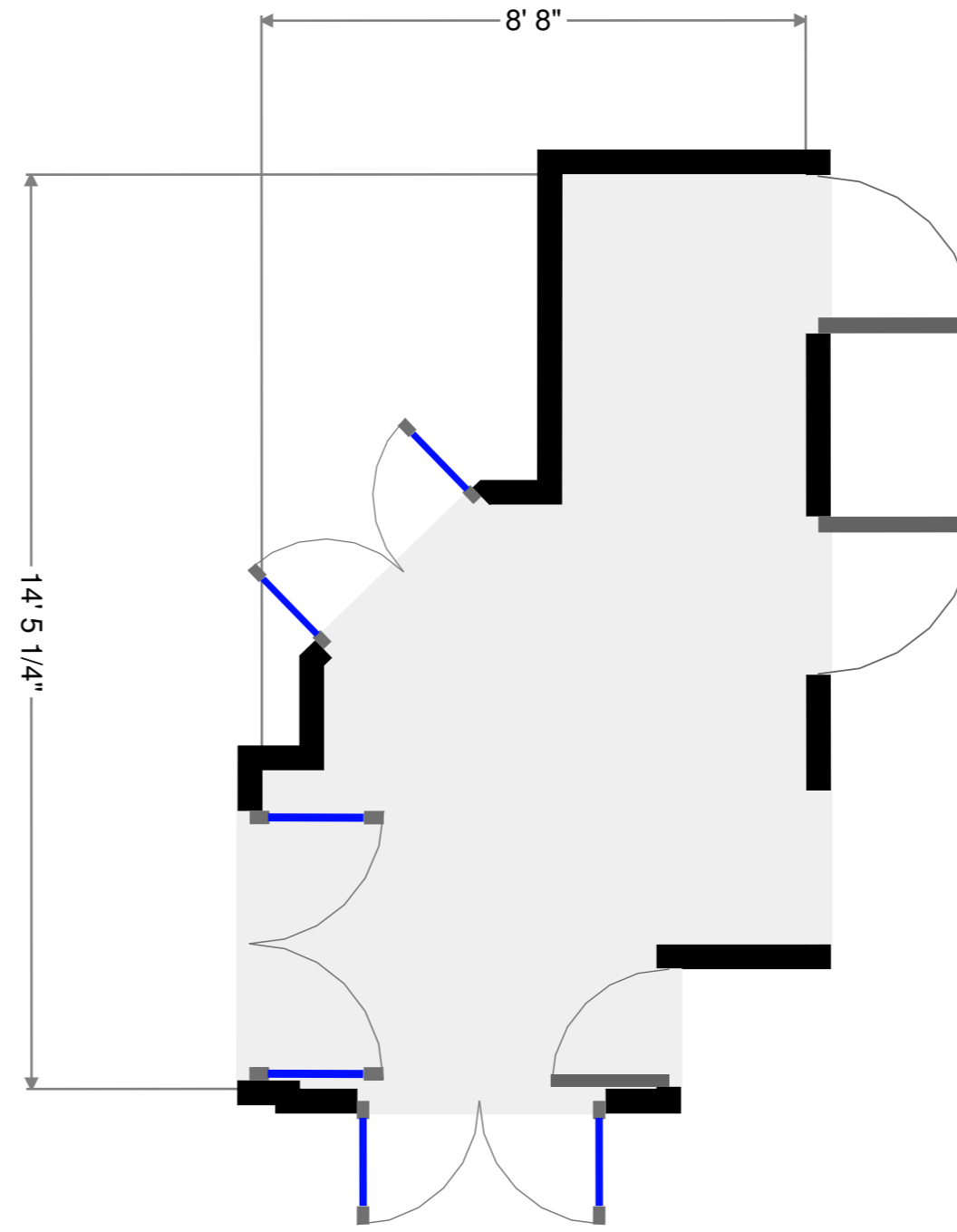
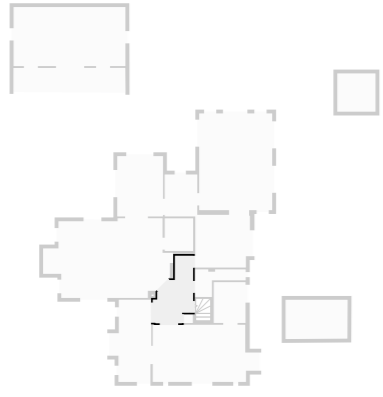
Dining room / Study

Width: 11' 11 3/4"
 Length: 12' 1/4"
 Area: 134.21 sq ft
 Perimeter: 47' 10 1/2"
 Ceiling Height: 8'



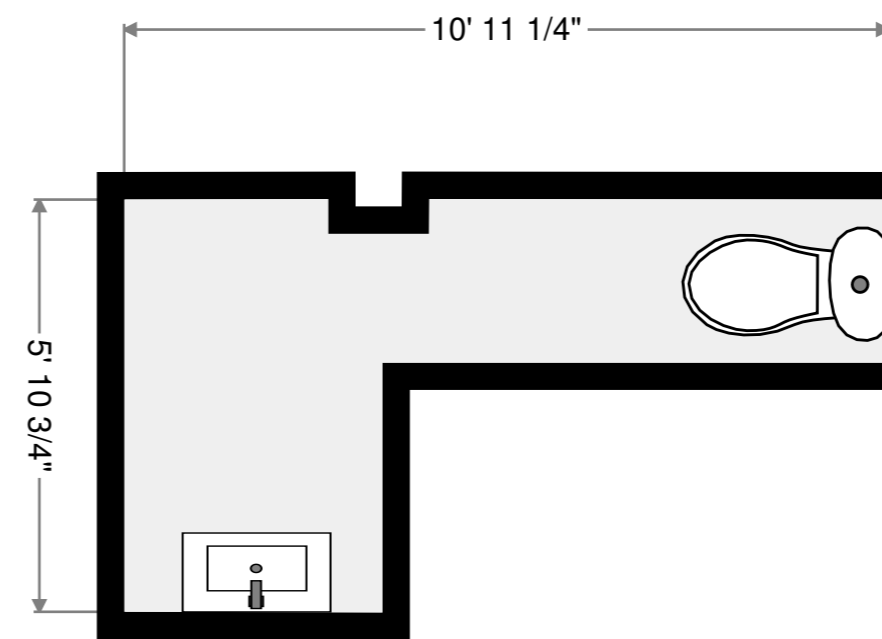
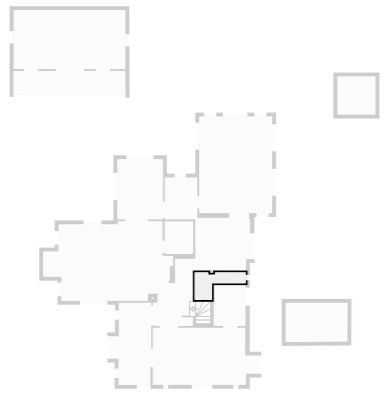
Hall

Width: 8' 8"
Length: 14' 5 1/4"
Area: 86.39 sq ft
Perimeter: 44' 6 1/2"
Ceiling Height: 8'



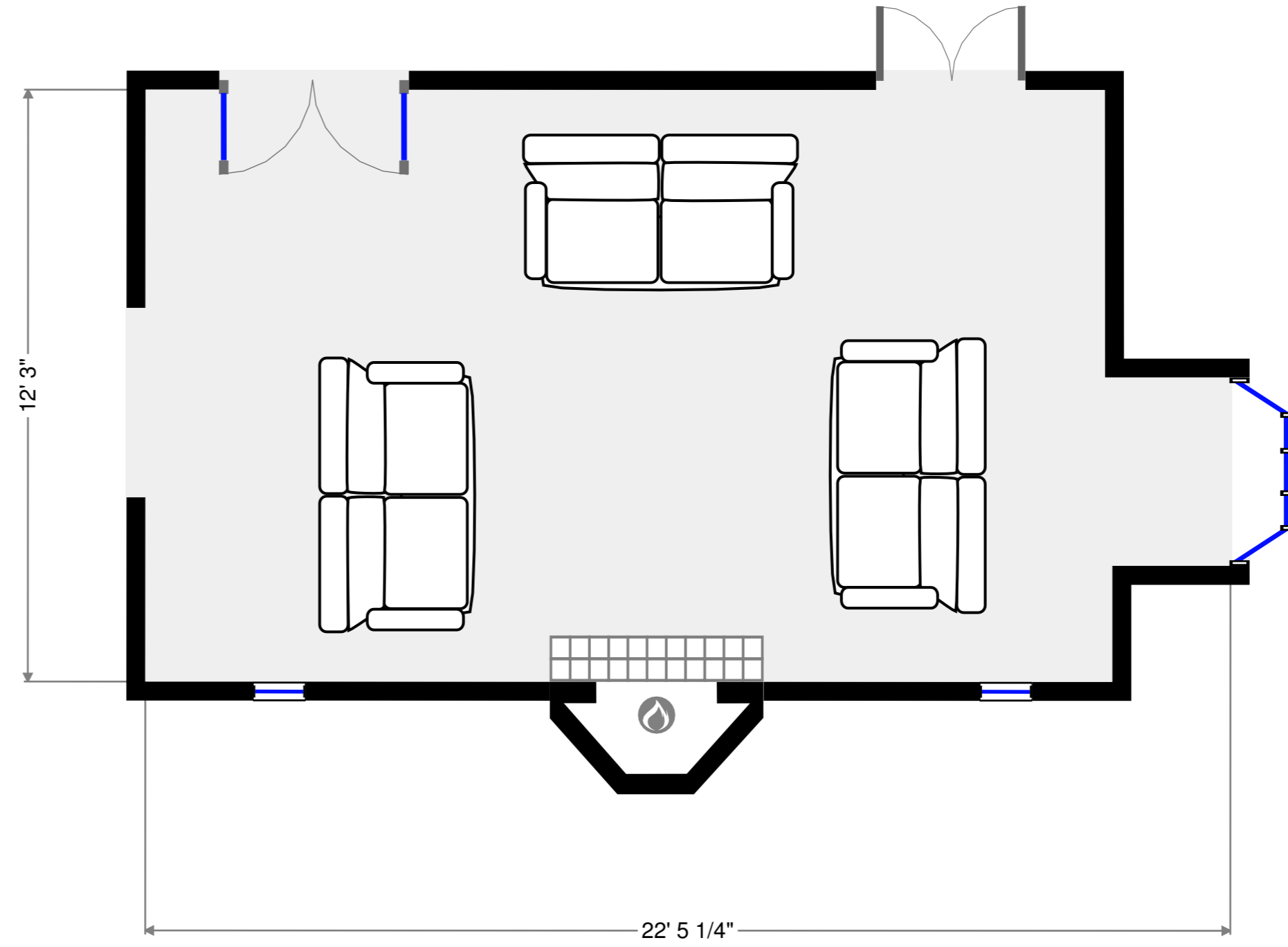
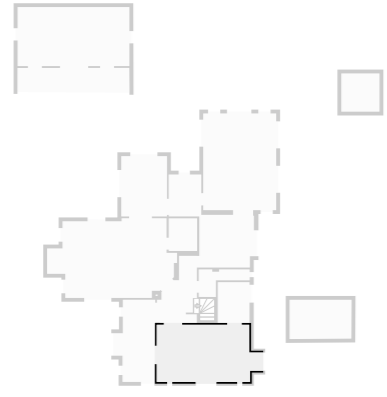
Bathroom

Width: 5' 10 3/4"
Length: 10' 11 1/4"
Area: 38.08 sq ft
Perimeter: 34' 8 1/2"
Ceiling Height: 8'



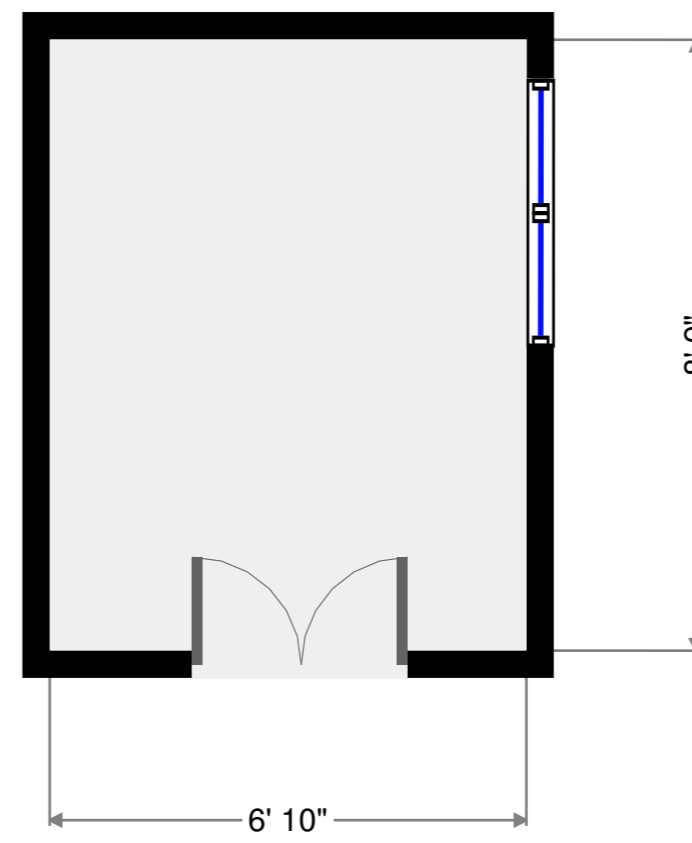
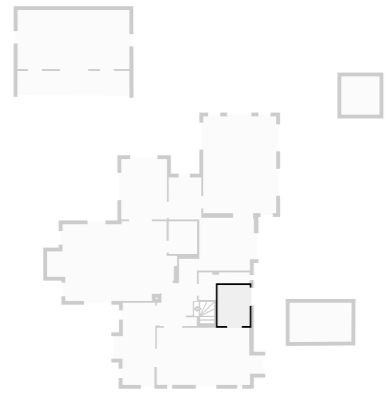
Living Room

Width: 12' 3"
Length: 22' 5 1/4"
Area: 253.64 sq ft
Perimeter: 69' 4 3/4"
Ceiling Height: 8'



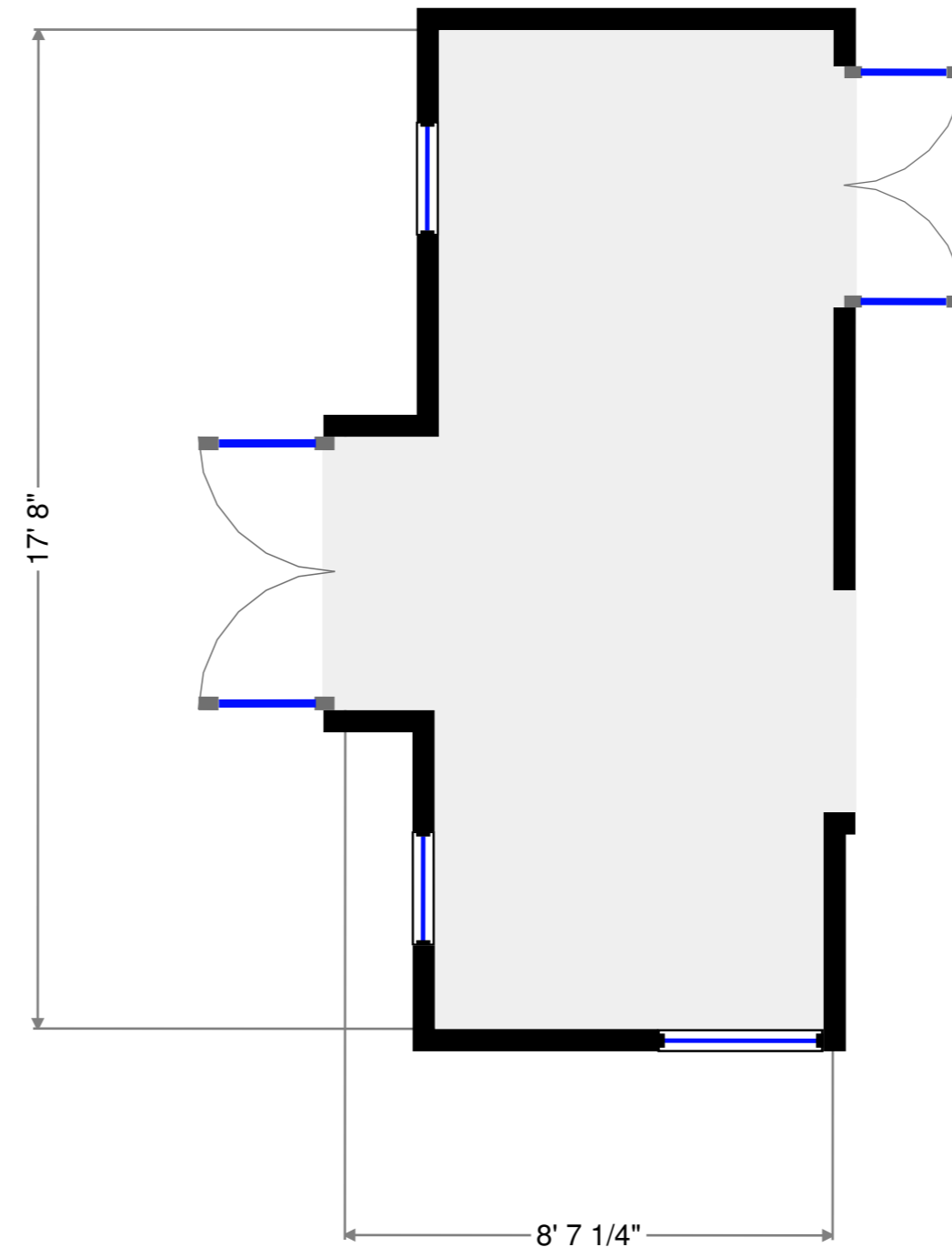
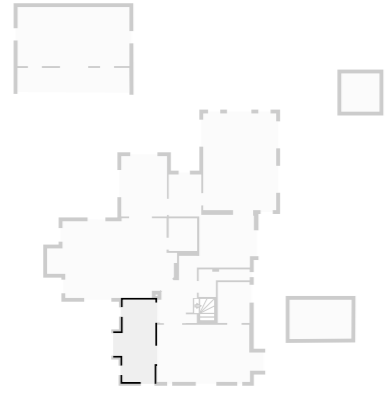
Study

Width: 6' 10"
Length: 8' 9"
Area: 59.70 sq ft
Perimeter: 31' 1 3/4"
Ceiling Height: 8'



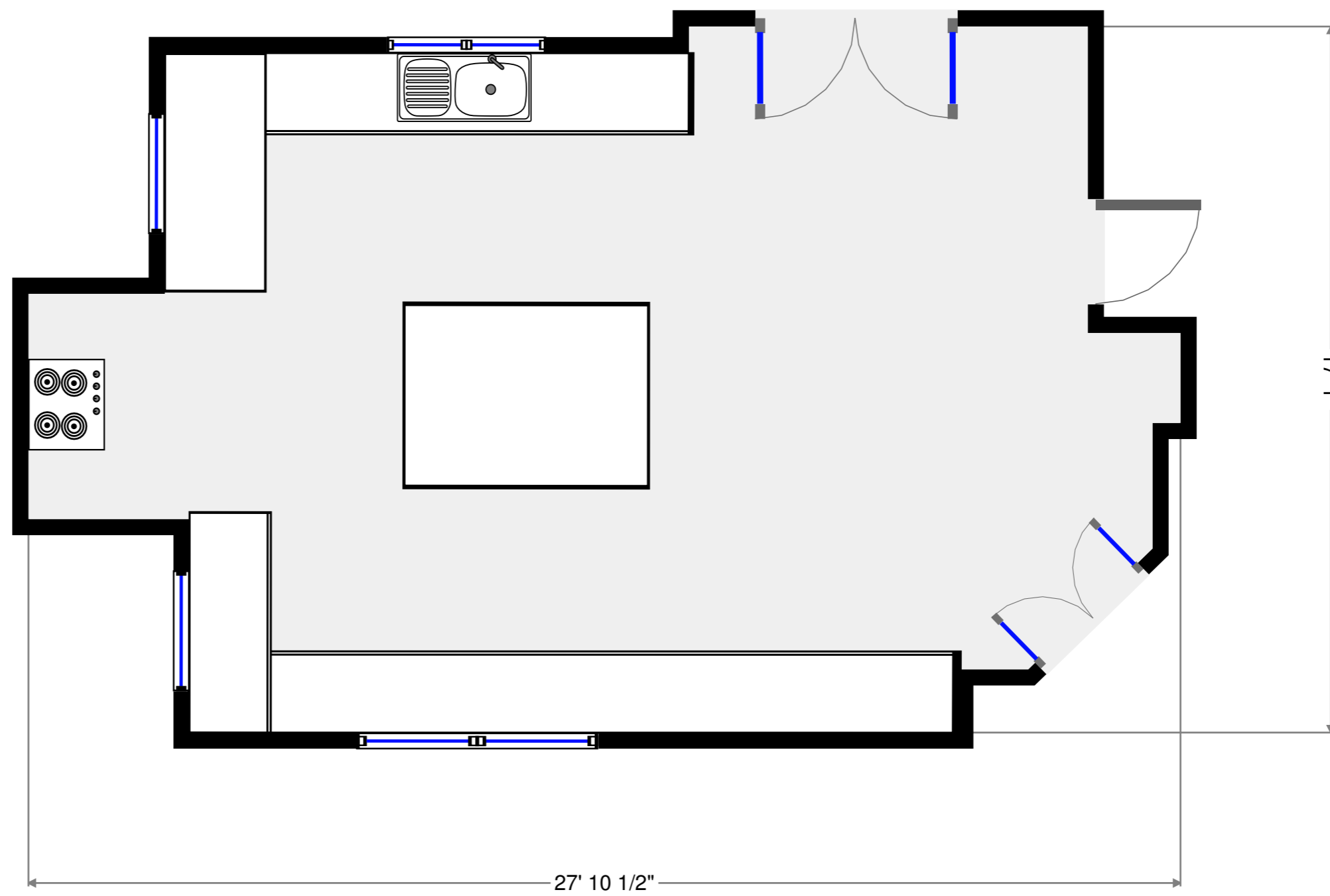
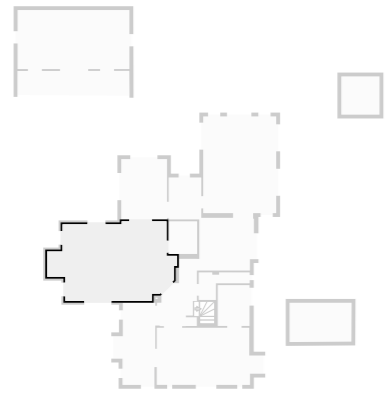
Porch

Width: 8' 7 1/4"
Length: 17' 8"
Area: 130.43 sq ft
Perimeter: 52' 5 3/4"
Ceiling Height: 8'



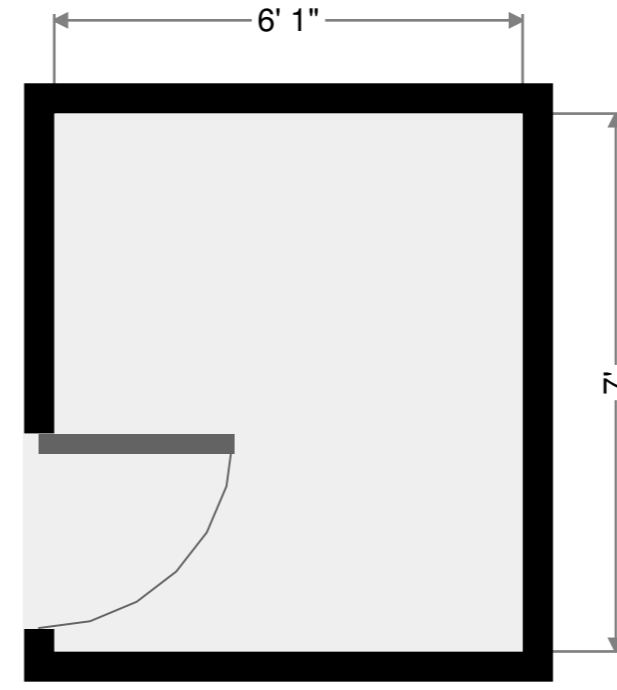
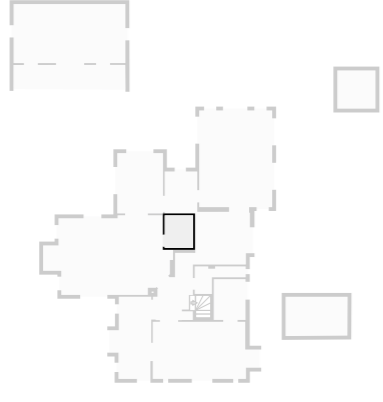
Kitchen

Width: 17' 1"
Length: 27' 10 1/2"
Area: 393.31 sq ft
Perimeter: 88' 2 1/2"
Ceiling Height: 8'



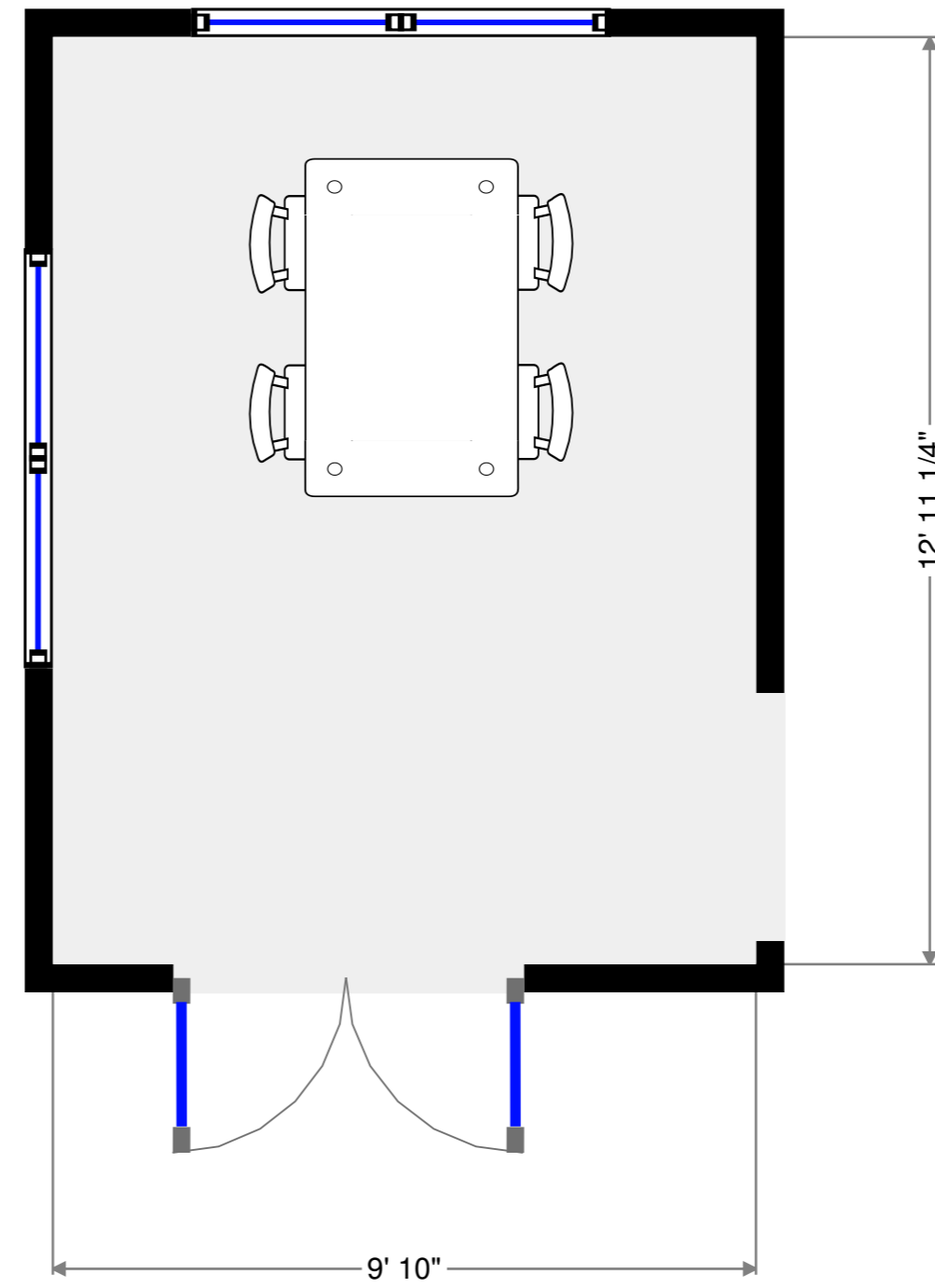
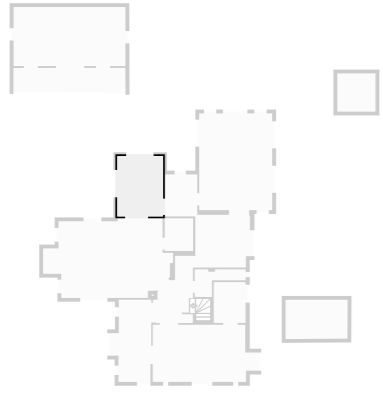
Pantry

Width: 6' 1"
Length: 7'
Area: 42.68 sq ft
Perimeter: 26' 2 1/4"



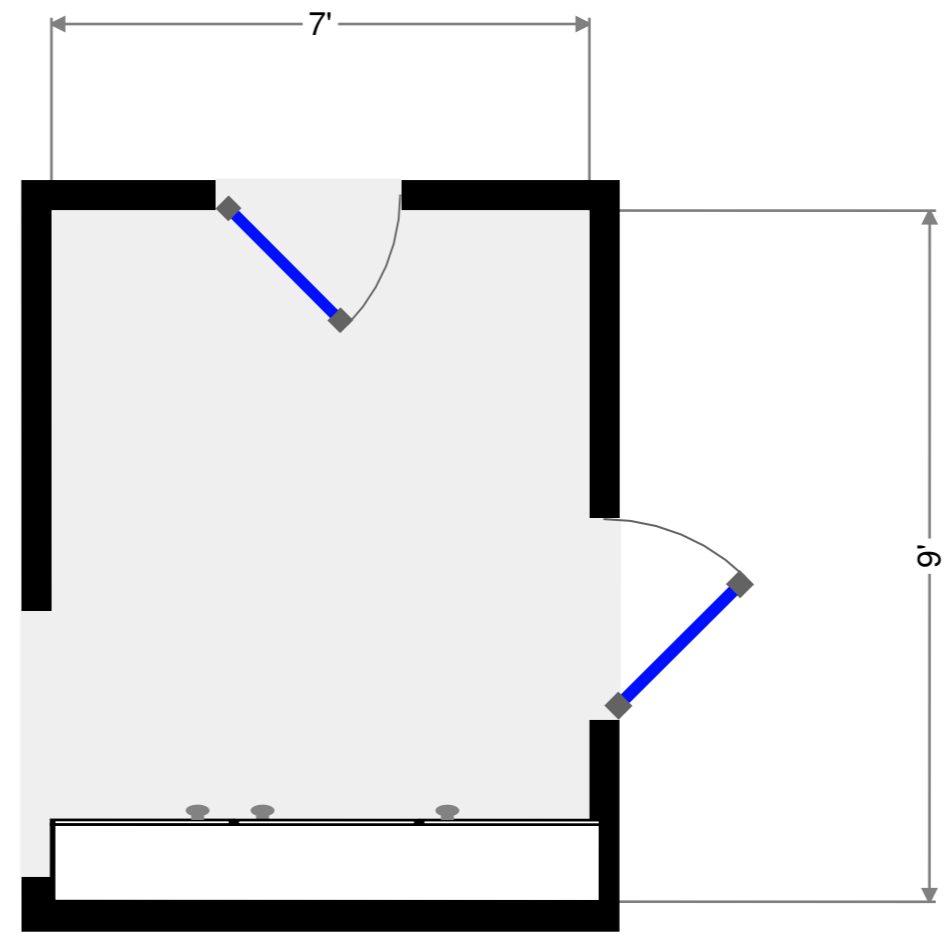
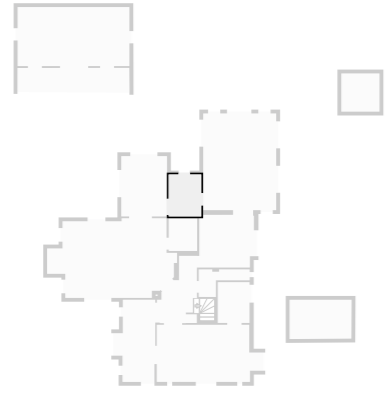
Breakfast room

Width: 9' 10"
Length: 12' 11 1/4"
Area: 127.02 sq ft
Perimeter: 45' 6 1/4"
Ceiling Height: 8'



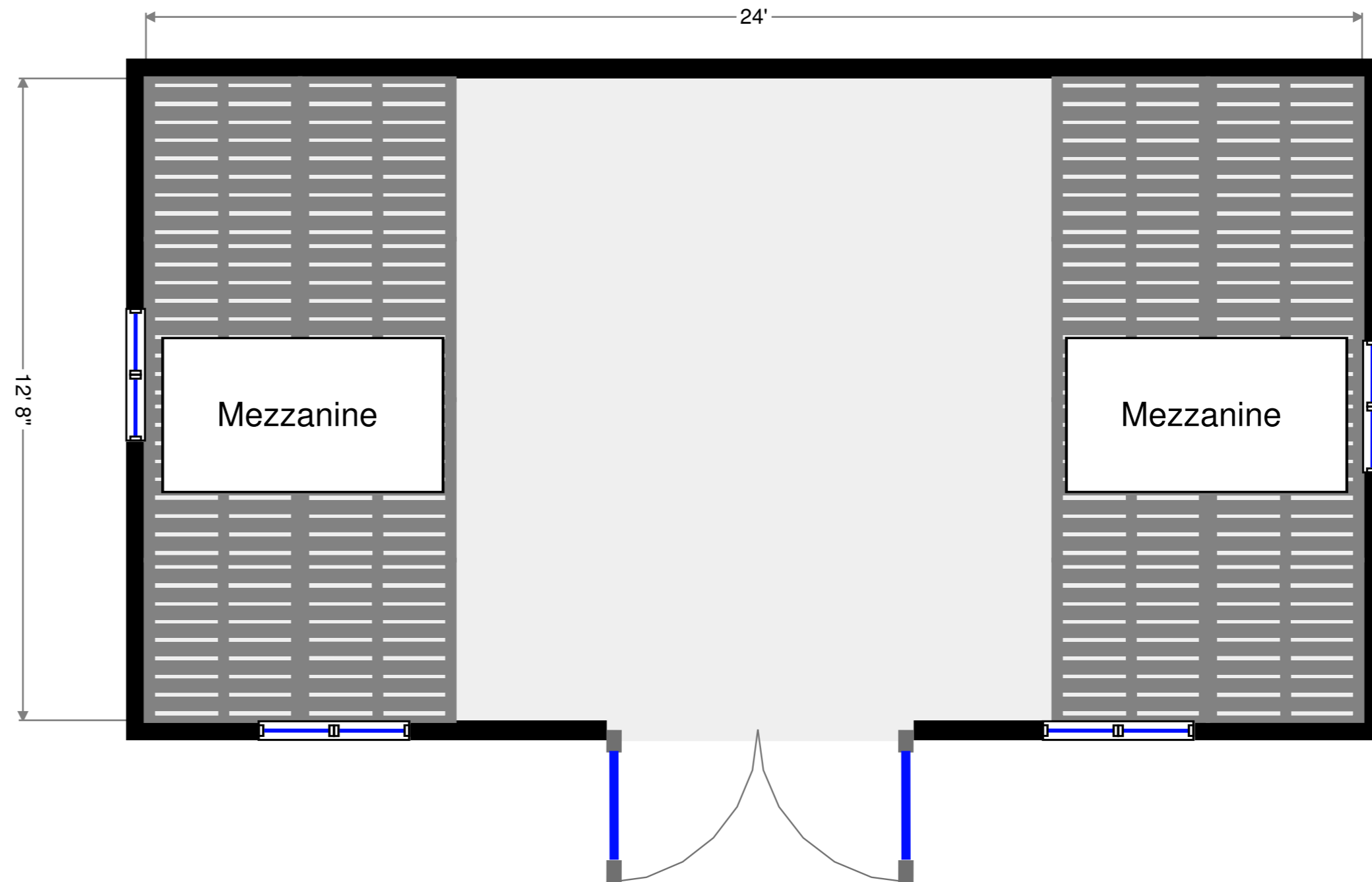
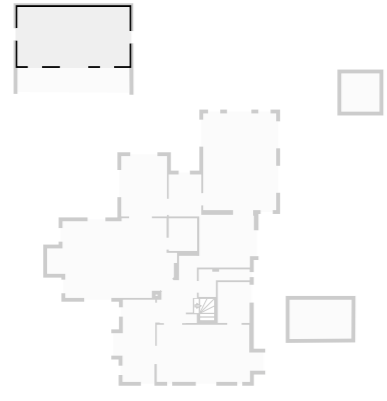
Utility room

Width: 7'
 Length: 9'
 Area: 62.95 sq ft
 Perimeter: 31' 11 3/4"

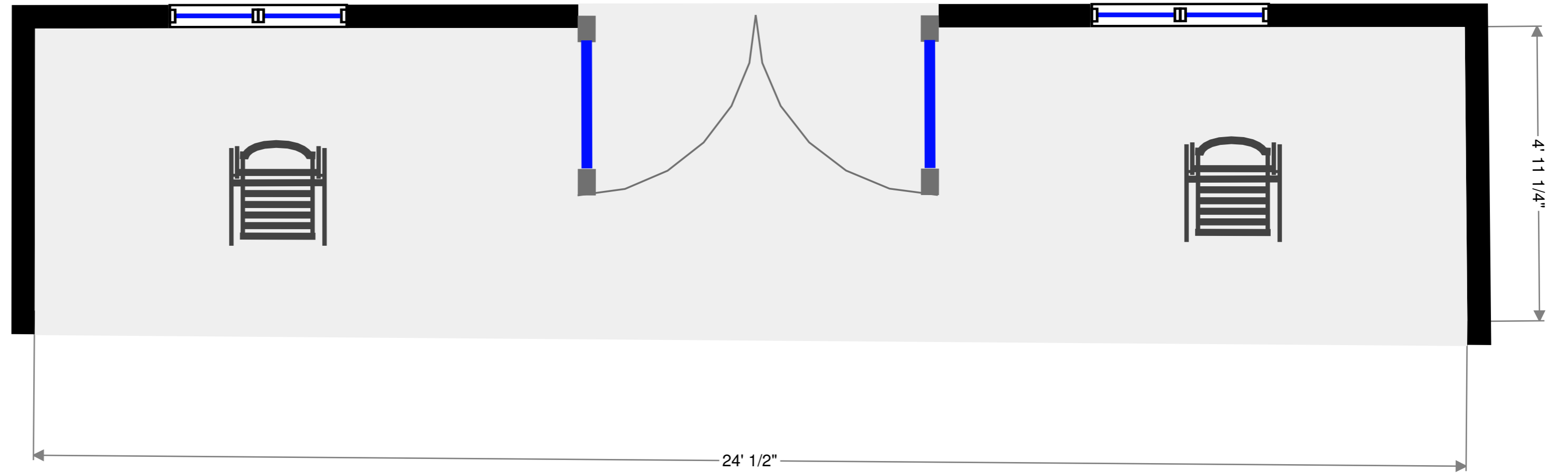
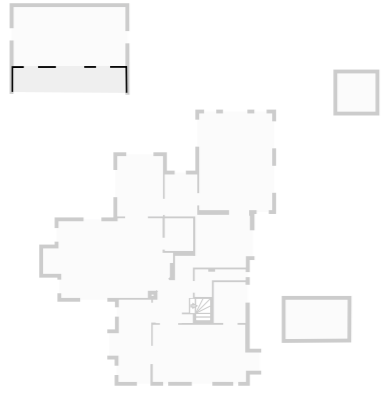


summer house / games room

Width: 12' 8"
 Length: 24'
 Area: 303.89 sq ft
 Perimeter: 73' 3 3/4"
 Ceiling Height: 7' 1/2"

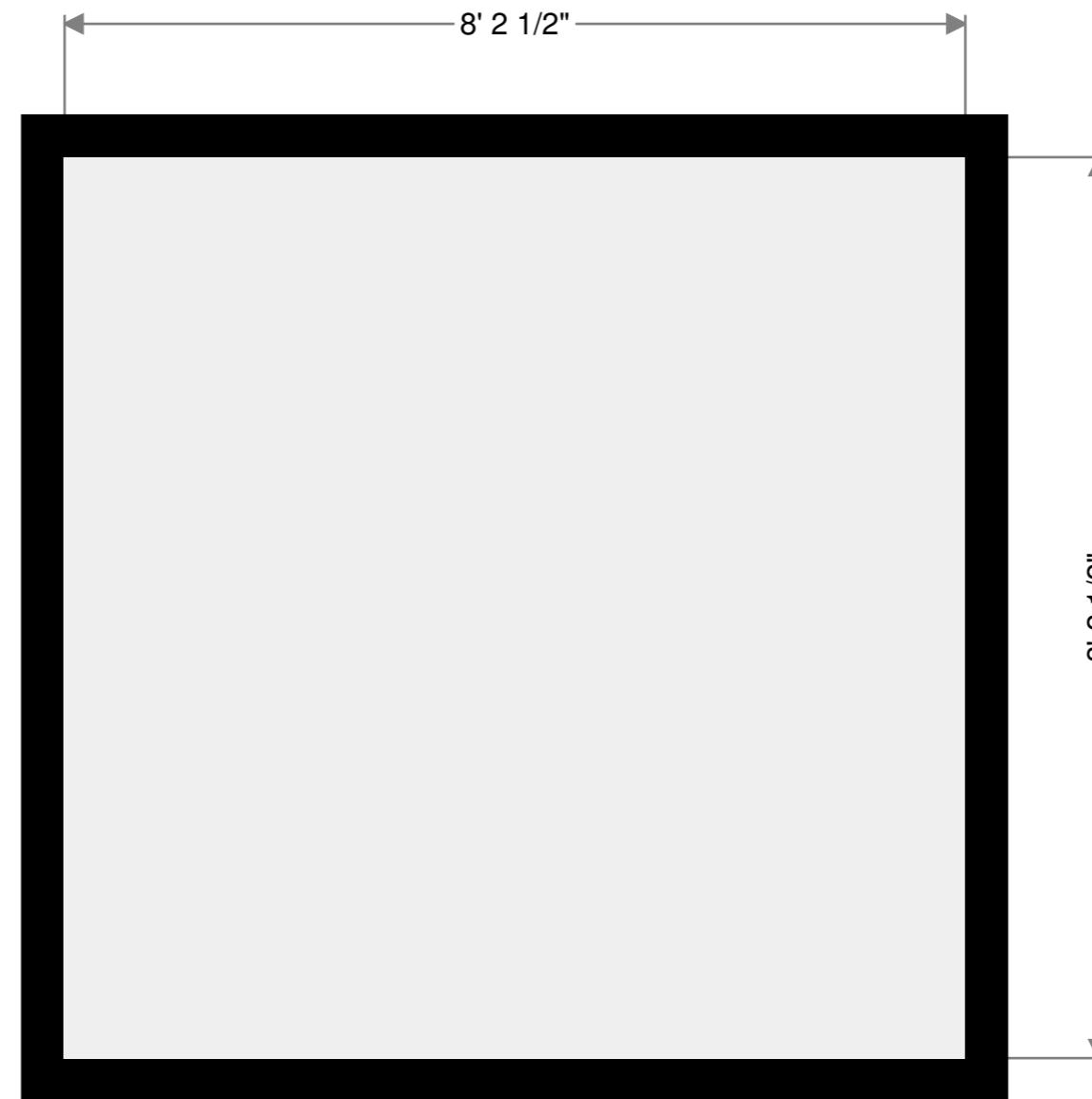
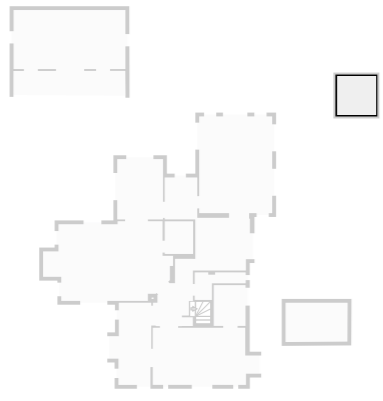


Width: 4' 11 1/4"
 Length: 24' 1/2"
 Area: 116.16 sq ft
 Perimeter: 57' 8 1/2"



Green house

Width: 8' 2 1/2"
 Length: 8' 2 1/2"
 Area: 67.27 sq ft
 Perimeter: 32' 9 3/4"

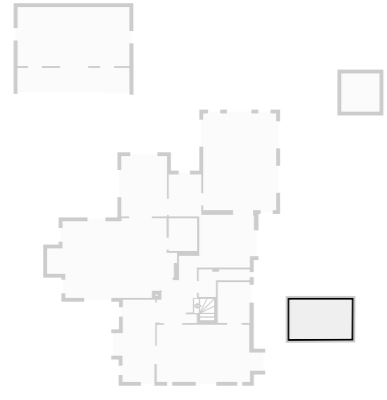


THIS FLOORPLAN IS PROVIDED WITHOUT WARRANTY OF ANY KIND. LOCKSTONES DISCLAIMS ANY WARRANTY INCLUDING, WITHOUT LIMITATION, SATISFACTORY QUALITY OR ACCURACY OF DIMENSIONS.



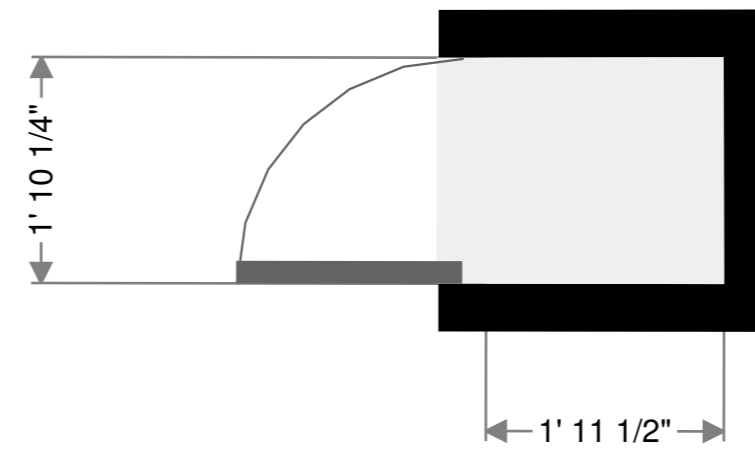
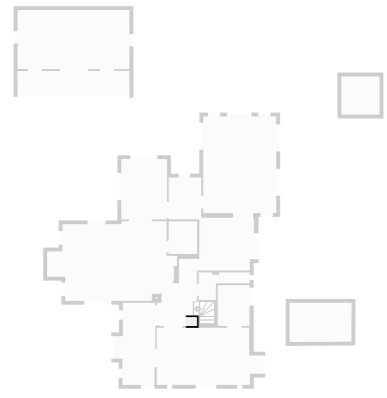
Tree house / log store

Width: 8' 5"
Length: 13' 3 3/4"
Area: 111.39 sq ft
Perimeter: 43' 4 1/4"



Closet

Width: 1' 10 1/4"
Length: 1' 11 1/2"
Area: 3.66 sq ft
Perimeter: 7' 7 3/4"





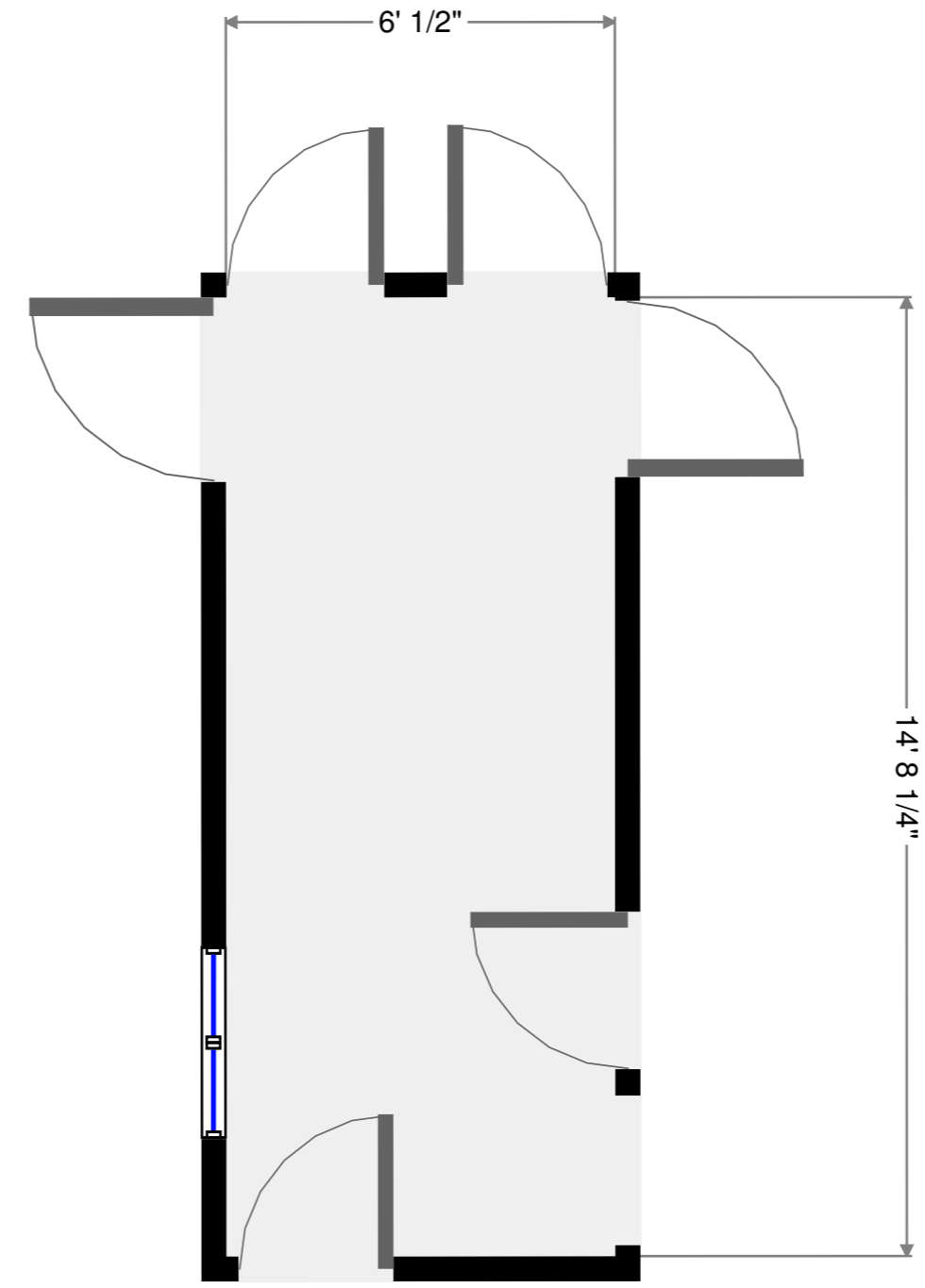
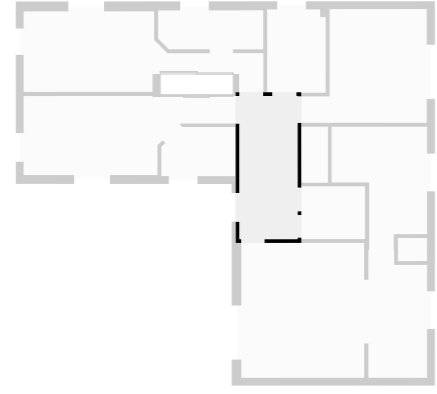
Lockstones
malmesbury@lockstones.co.uk
01666 338633
2016-05-23

3768 sq ft



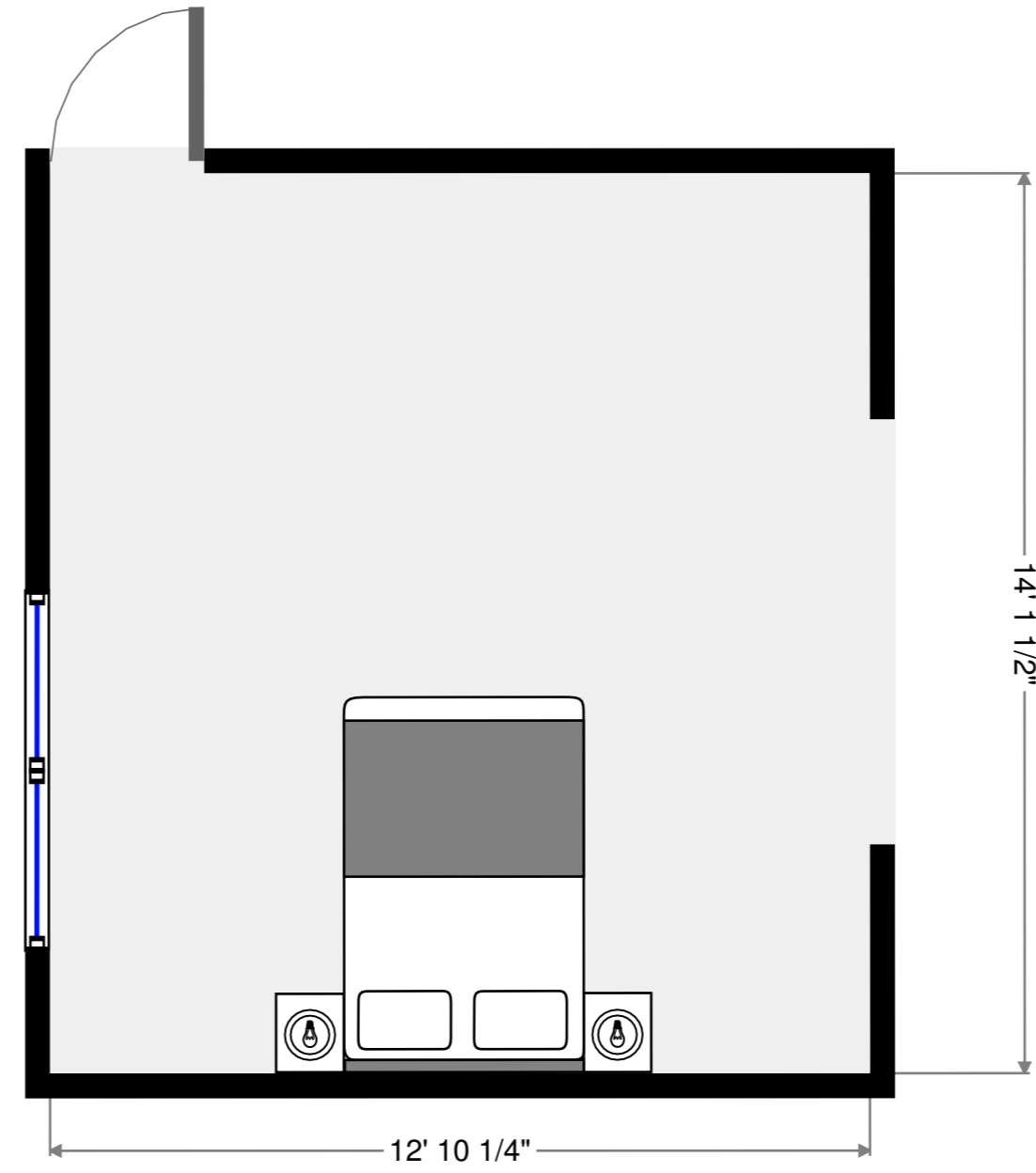
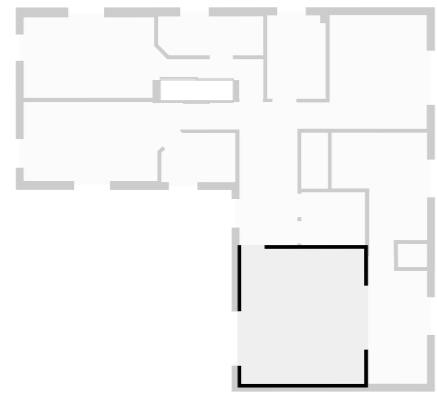
Landing

Width: 6' 1"
Length: 15'
Area: 91.08 sq ft
Perimeter: 42' 1 1/2"
Ceiling Height: 8' 1 1/2"



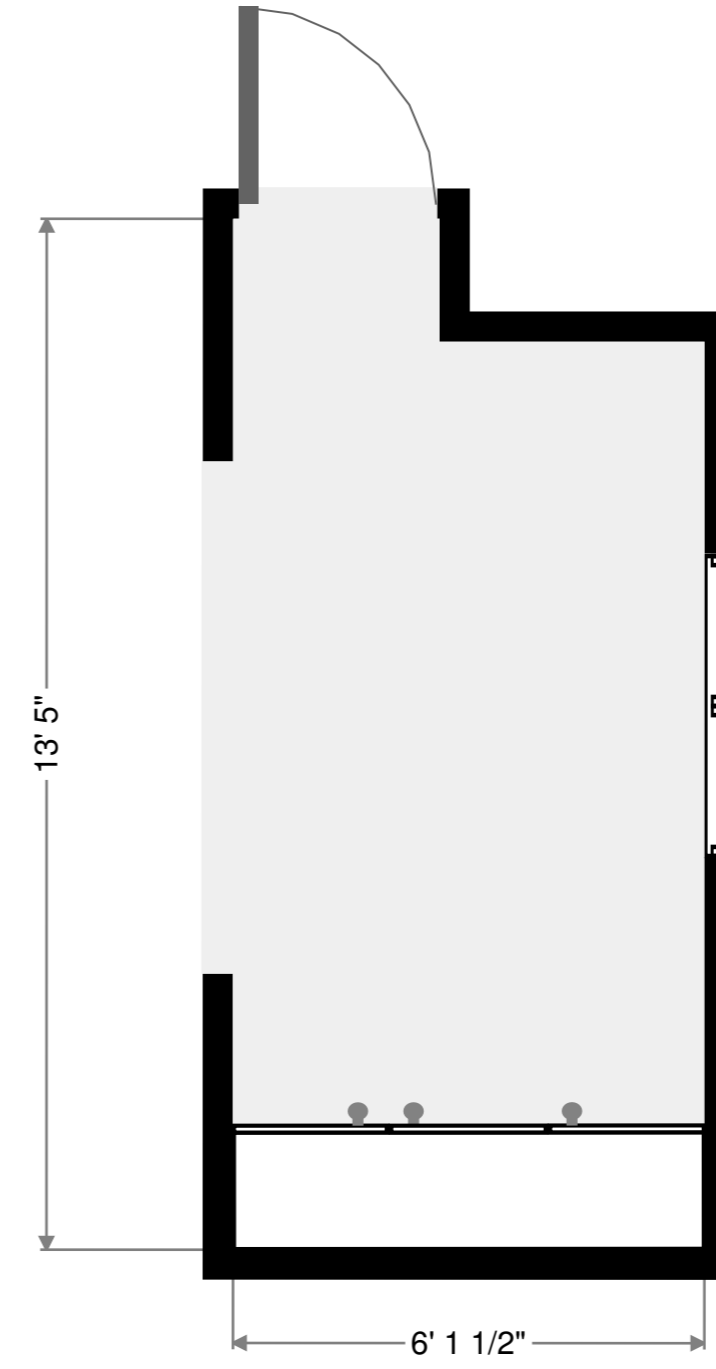
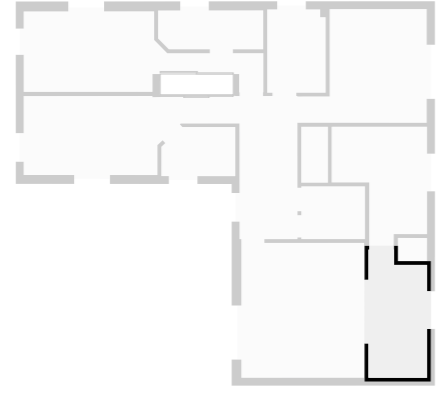
Master Bedroom

Width: 12' 10 1/4"
Length: 14' 1 1/2"
Area: 181.65 sq ft
Perimeter: 53' 11 3/4"
Ceiling Height: 7' 10"



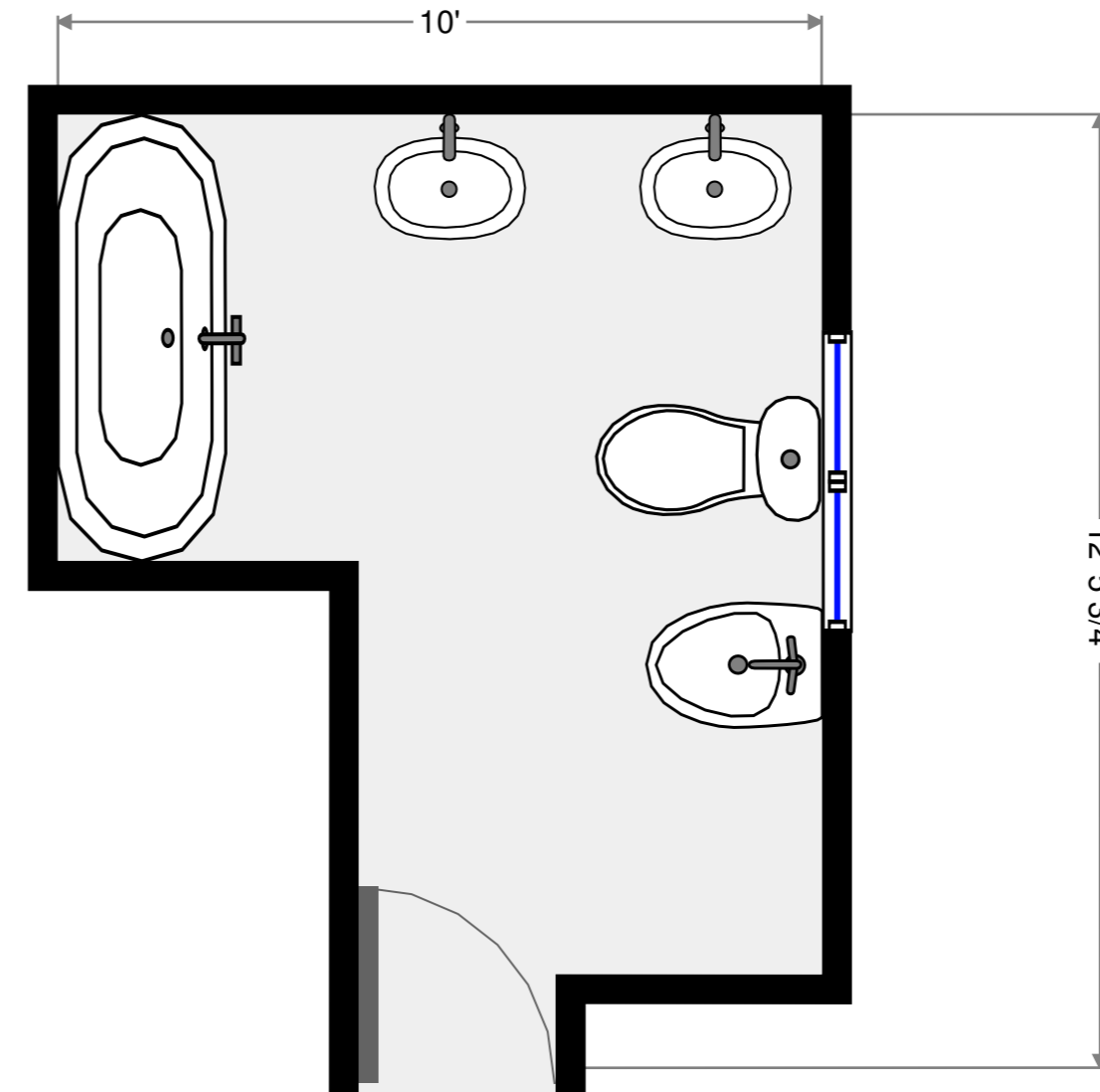
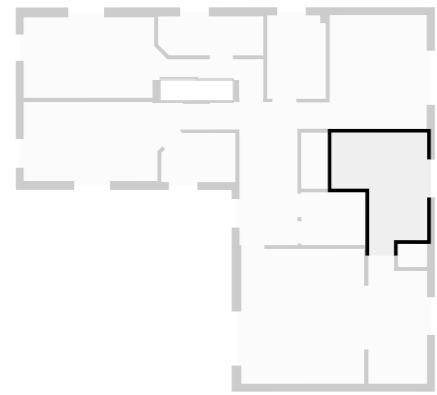
Dressing room

Width: 6' 1 1/2"
 Length: 13' 5"
 Area: 76.82 sq ft
 Perimeter: 39' 1 1/4"
 Ceiling Height: 7' 10"



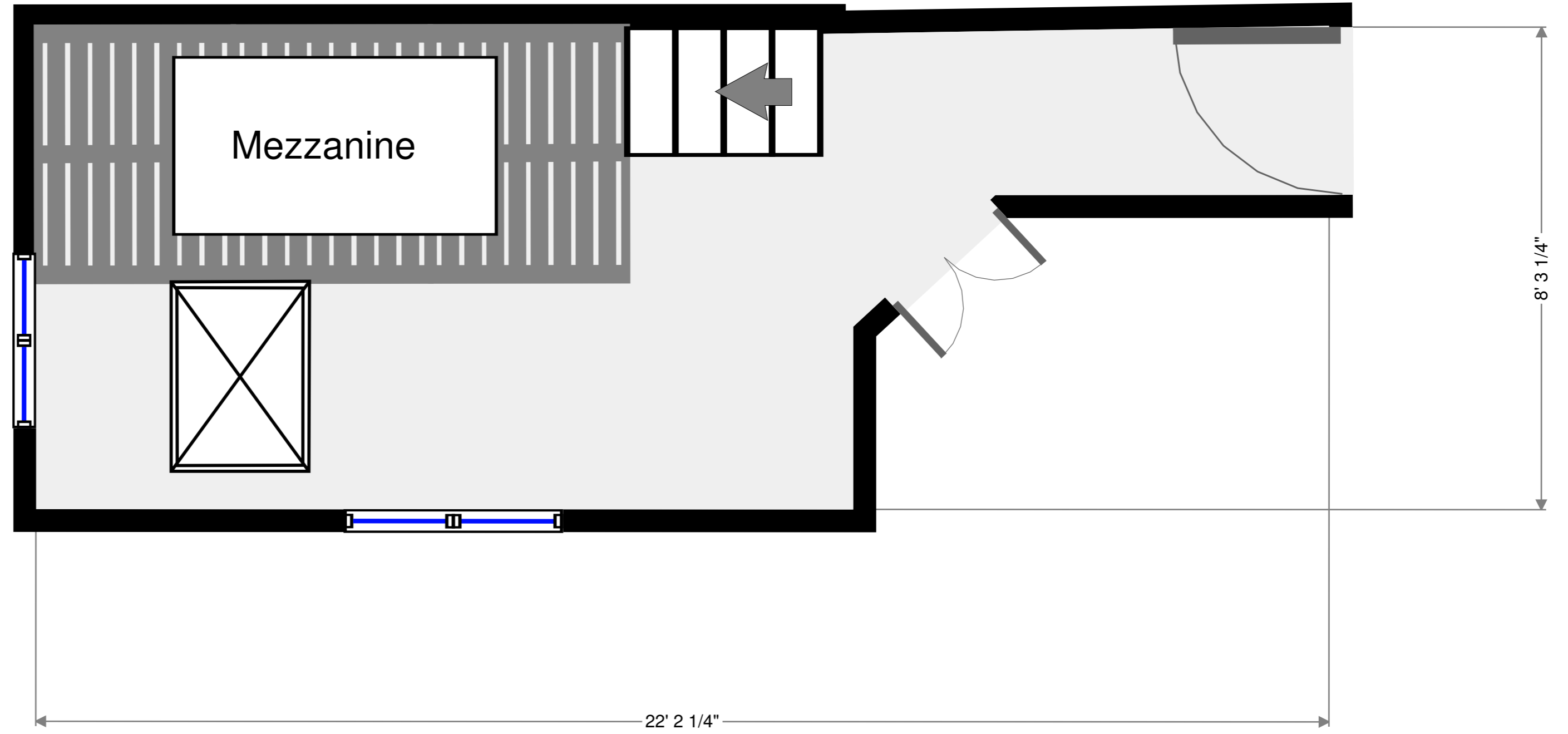
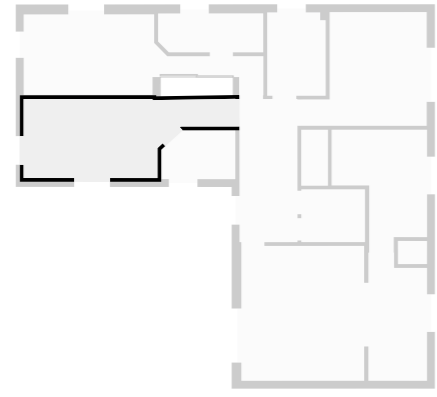
Bathroom

Width: 10'
 Length: 12' 5 3/4"
 Area: 94.29 sq ft
 Perimeter: 44' 11 1/2"
 Ceiling Height: 7' 10"



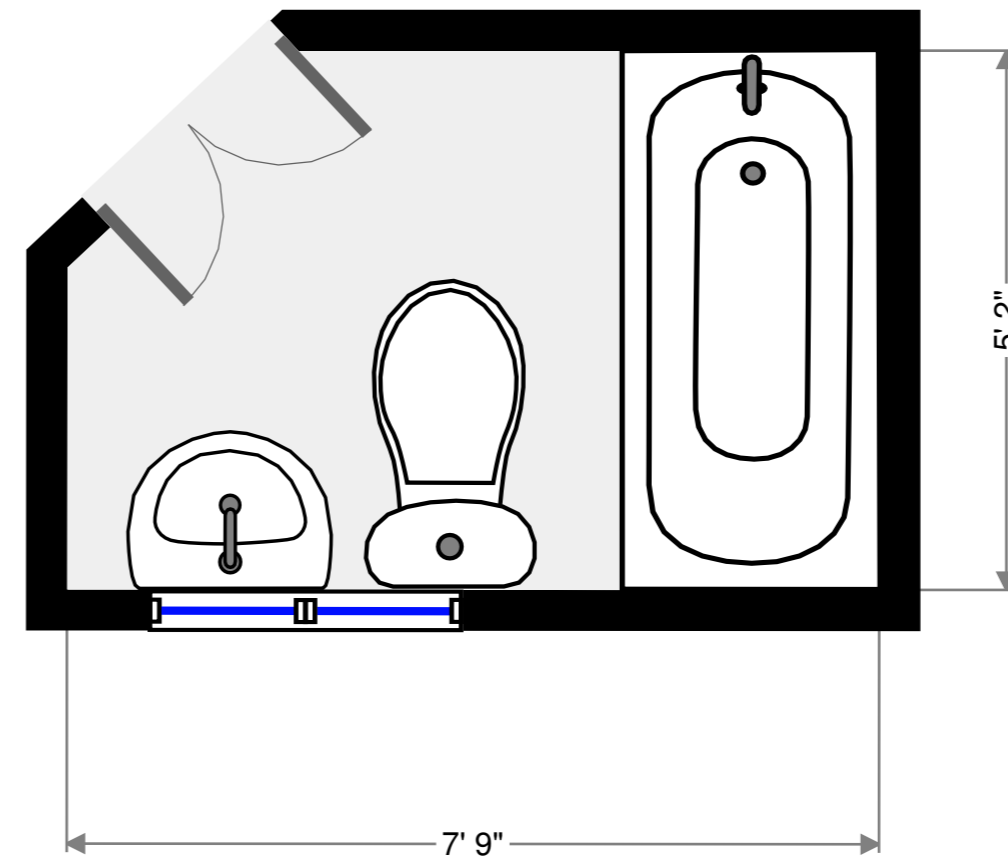
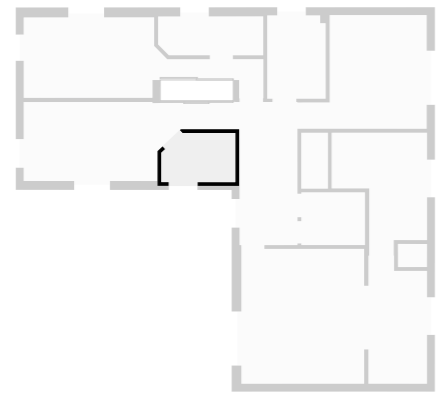
Bedroom

Width: 8' 3 1/4"
 Length: 22' 2 1/4"
 Area: 141.81 sq ft
 Perimeter: 59' 8 1/4"
 Ceiling Height: 7' 10"



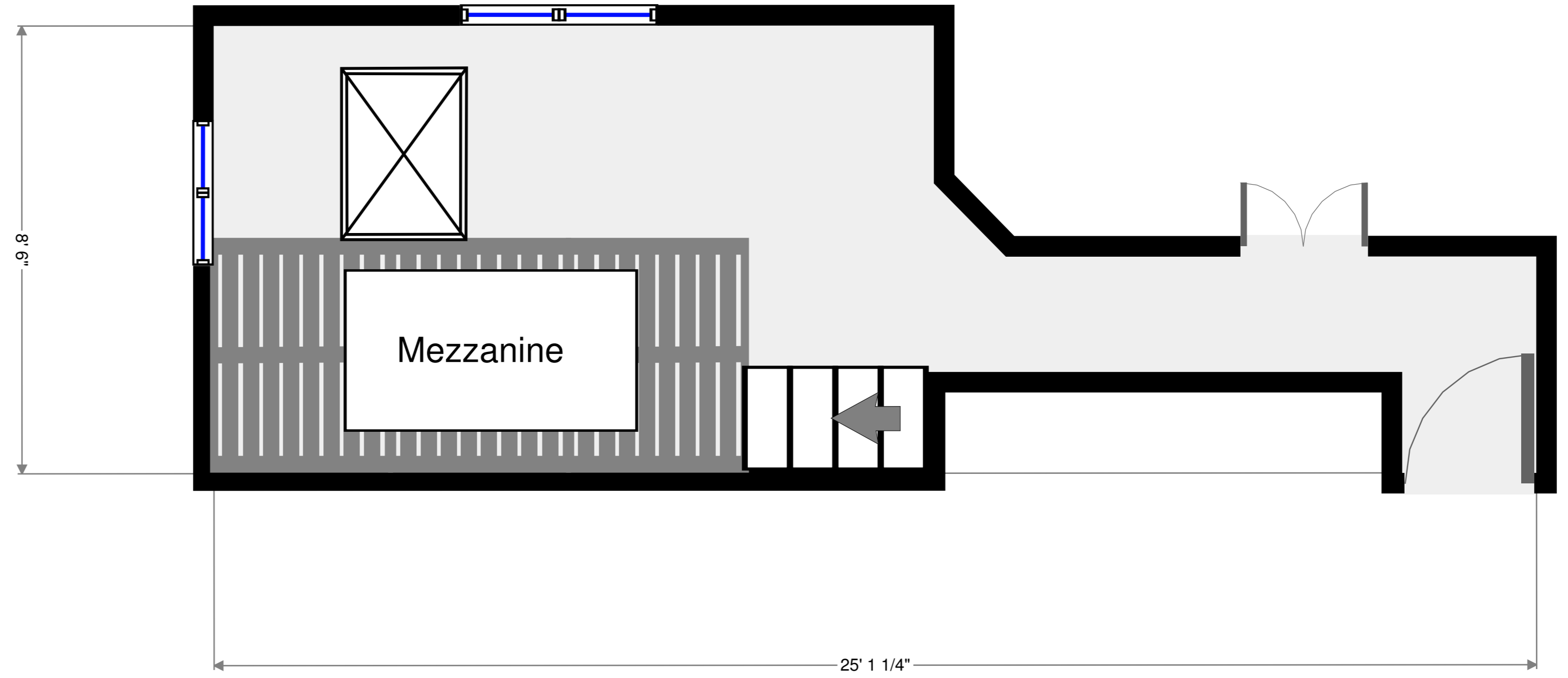
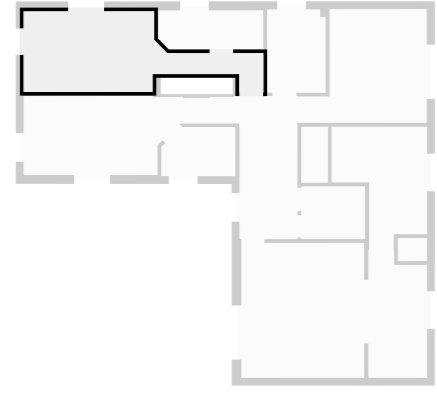
Bathroom

Width: 5' 2"
 Length: 7' 9"
 Area: 37.59 sq ft
 Perimeter: 24' 6 1/2"



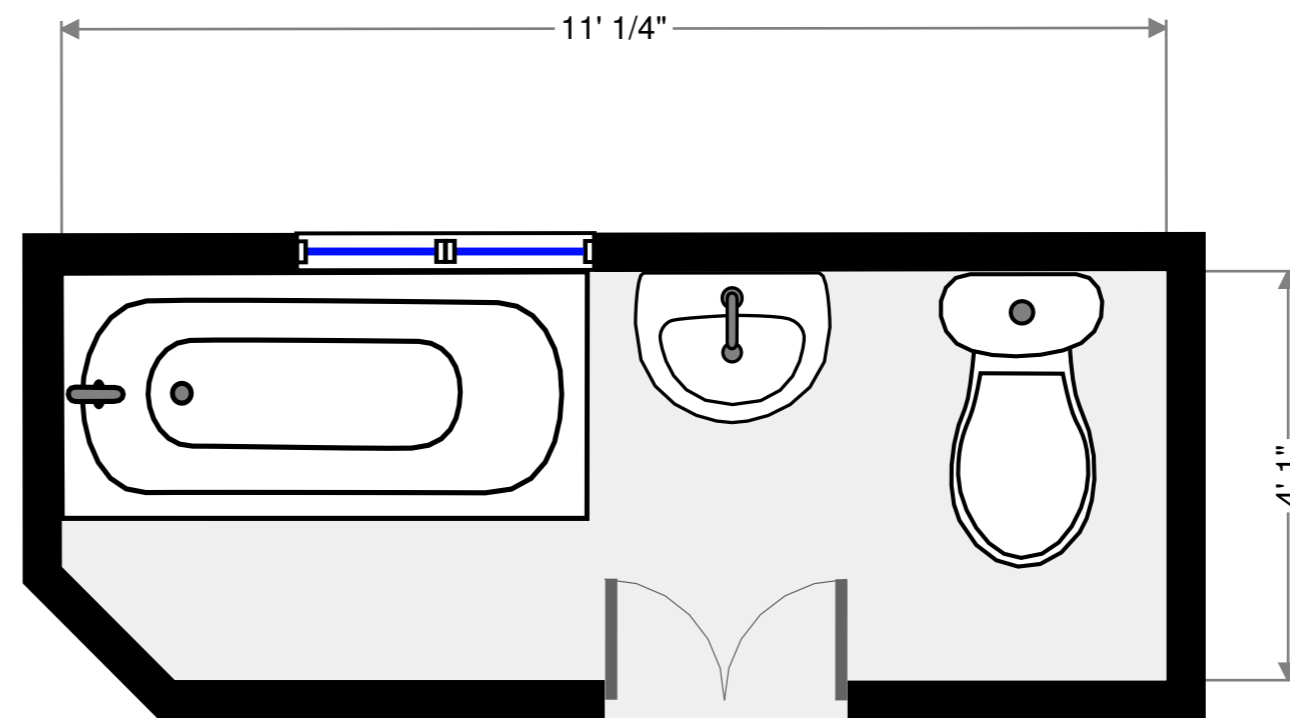
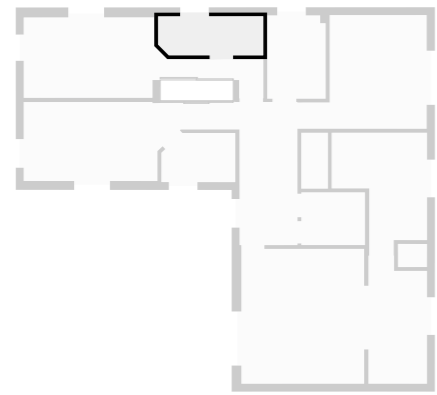
Bedroom

Width: 8' 6"
 Length: 25' 1 1/4"
 Area: 145.74 sq ft
 Perimeter: 70' 1 1/4"
 Ceiling Height: 7' 10"



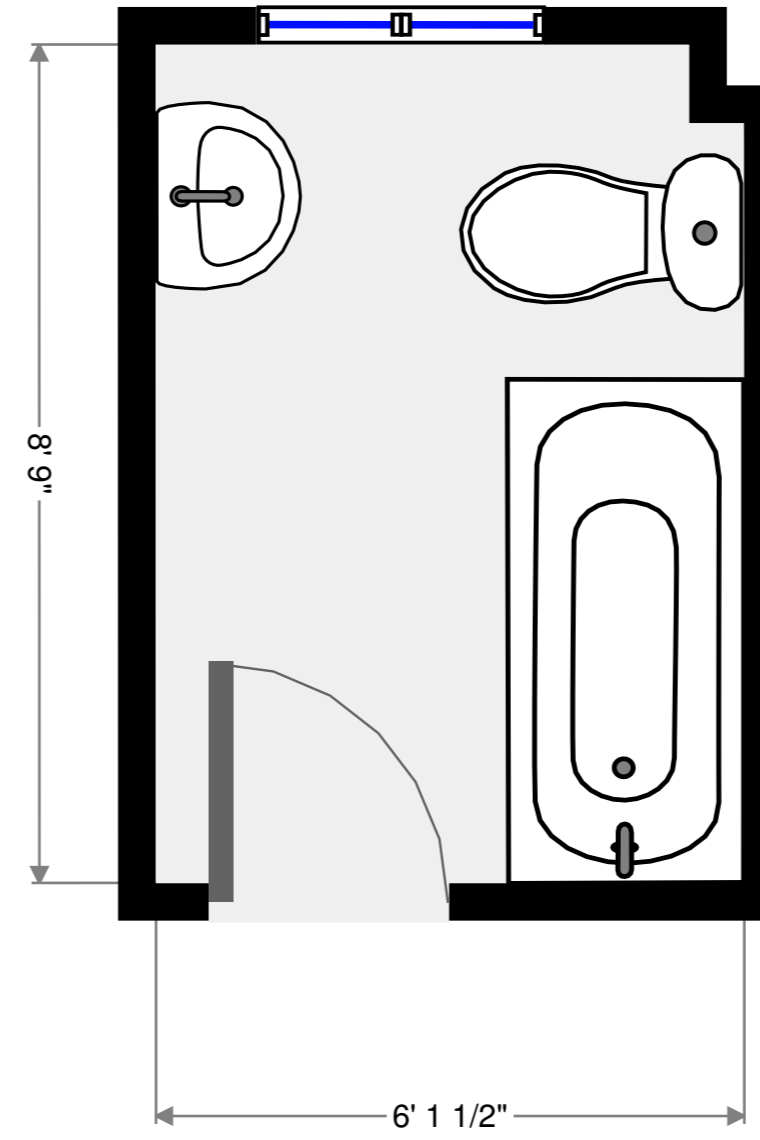
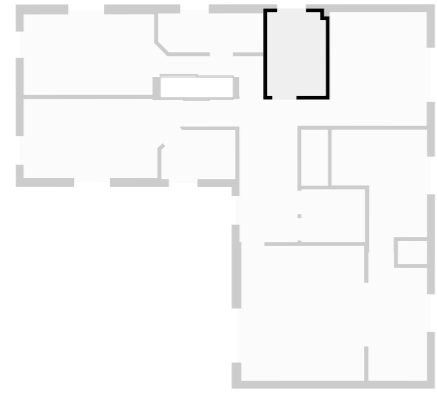
Bathroom

Width: 4' 1"
 Length: 11' 1/4"
 Area: 44.26 sq ft
 Perimeter: 29' 6 1/4"



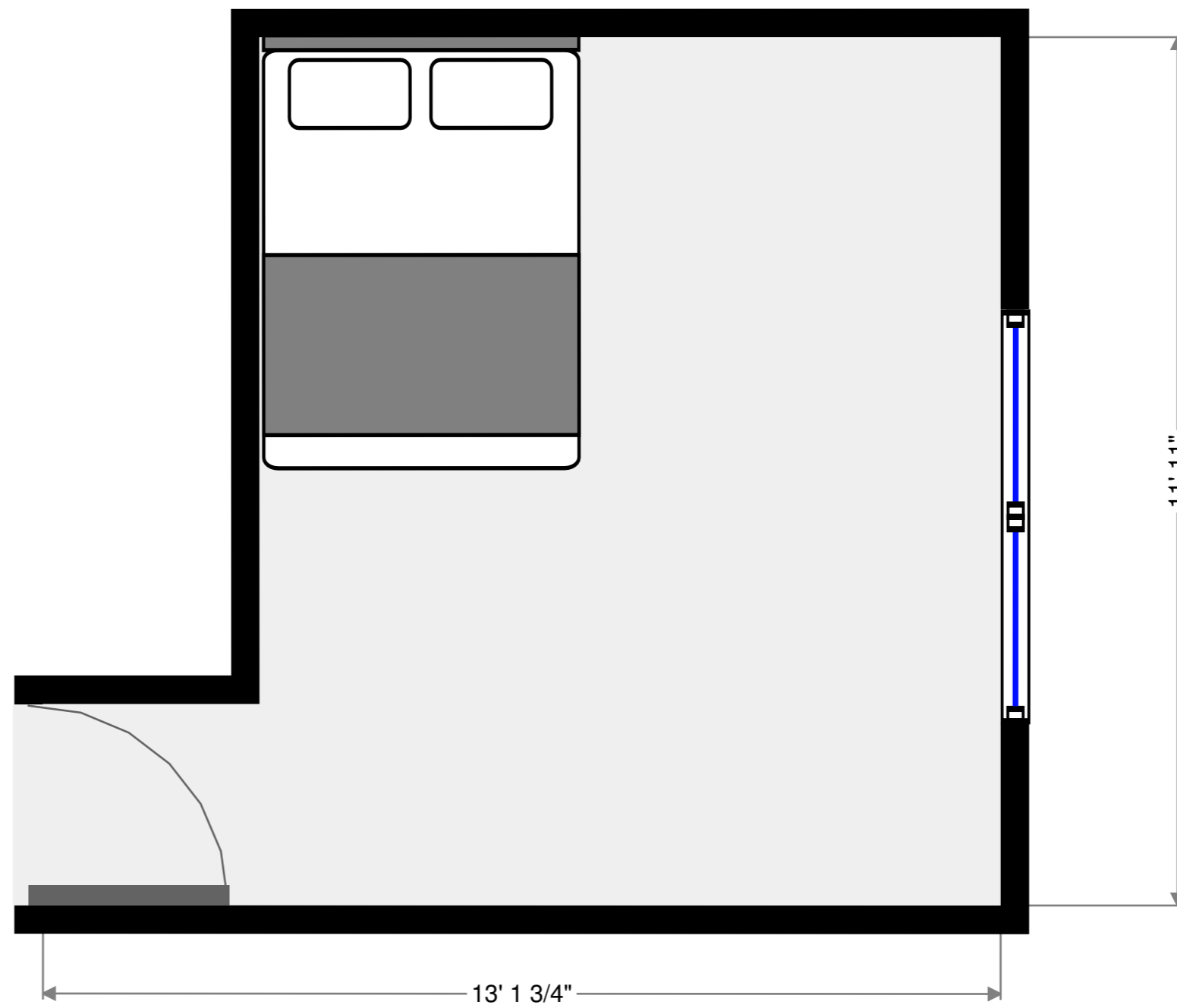
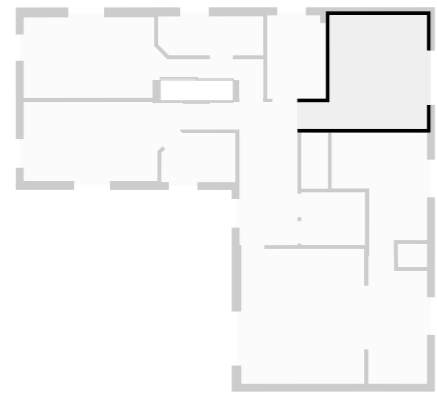
Bathroom

Width: 6' 1 1/2"
Length: 8' 9"
Area: 53.01 sq ft
Perimeter: 29' 8 1/2"
Ceiling Height: 7' 10"



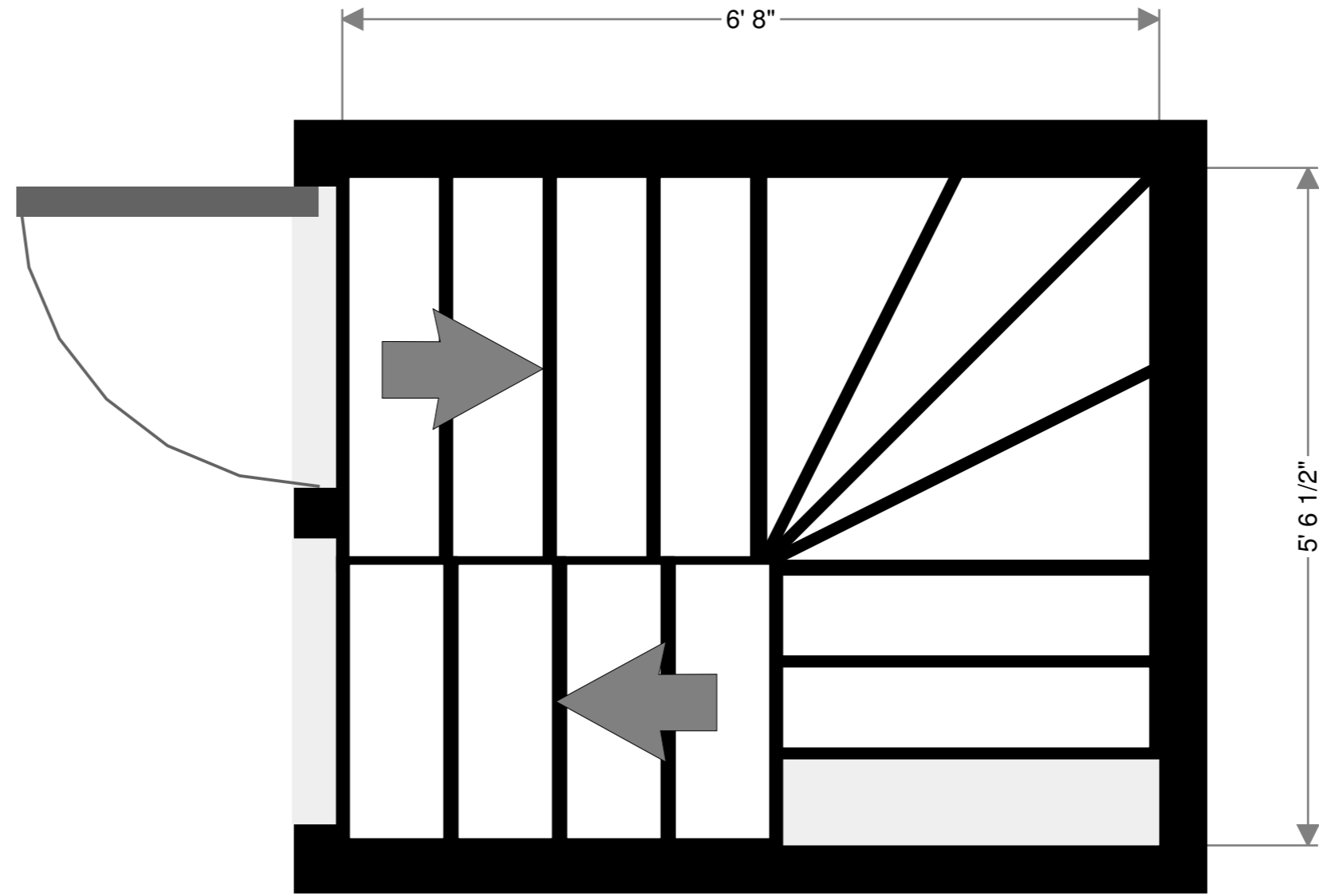
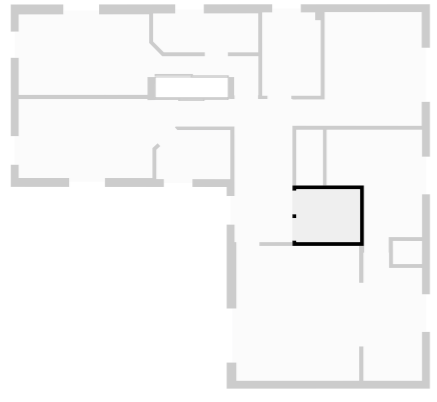
Bedroom

Width: 11' 11"
Length: 13' 1 3/4"
Area: 129.26 sq ft
Perimeter: 50' 1 1/4"
Ceiling Height: 7' 10"



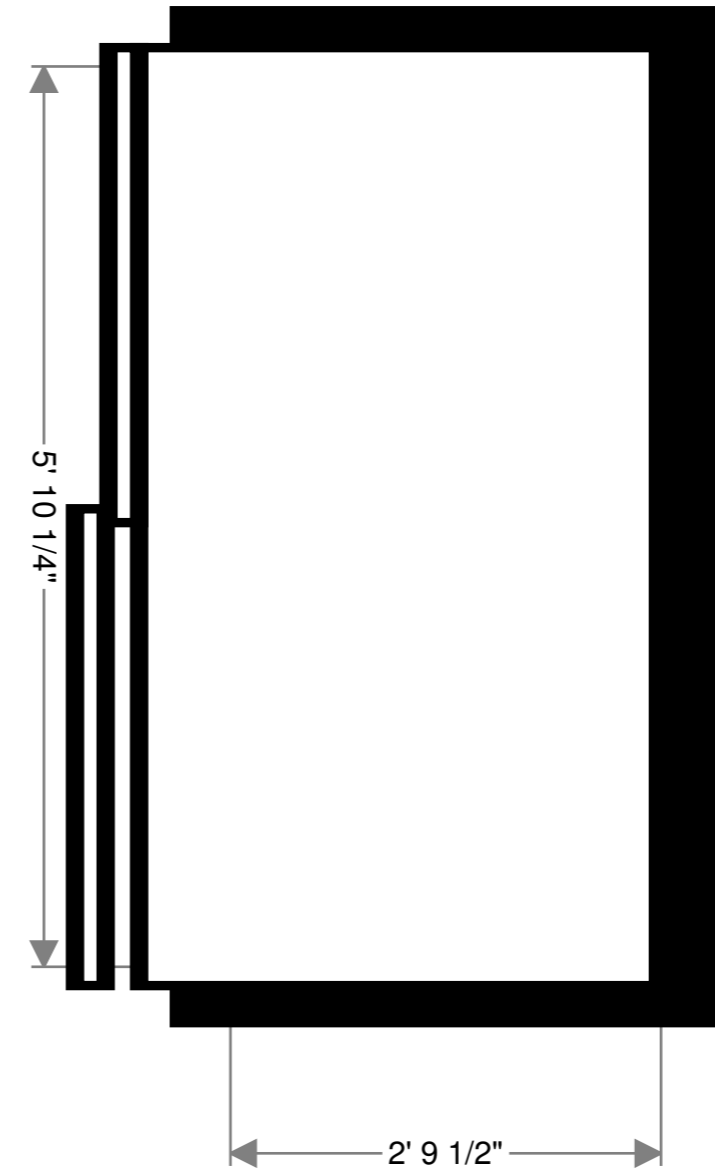
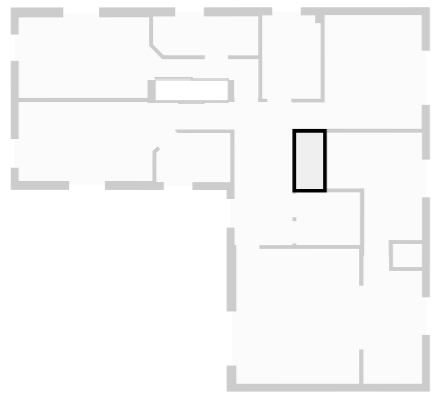
Stairway

Width: 5' 6 1/2"
Length: 6' 8"
Area: 36.88 sq ft
Perimeter: 24' 4 3/4"



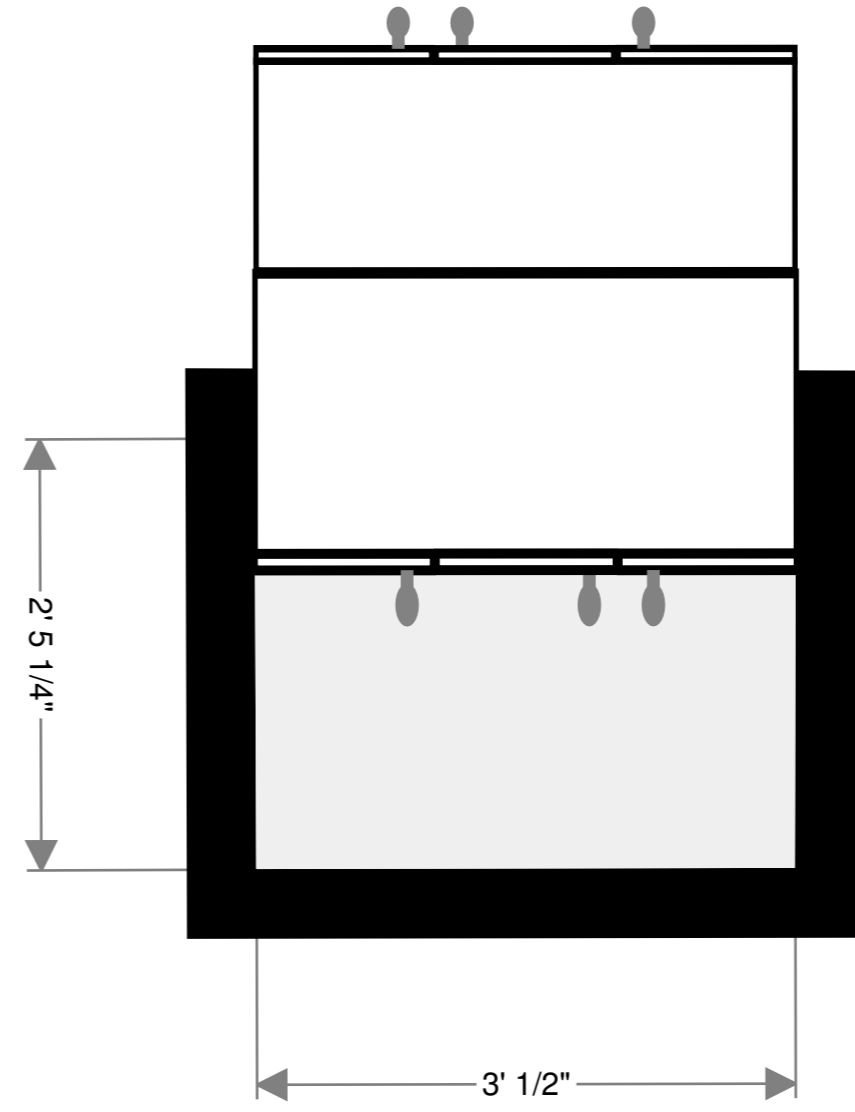
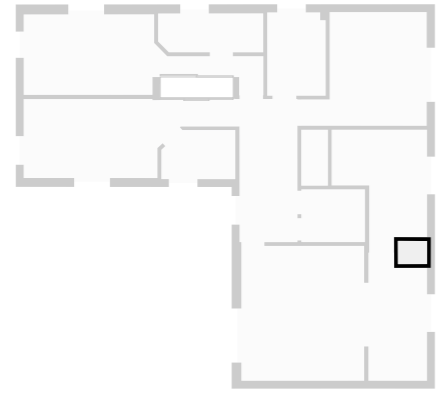
Closet

Width: 2' 9 1/2"
Length: 5' 10 1/4"
Area: 16.42 sq ft
Perimeter: 17' 3 3/4"



Closet

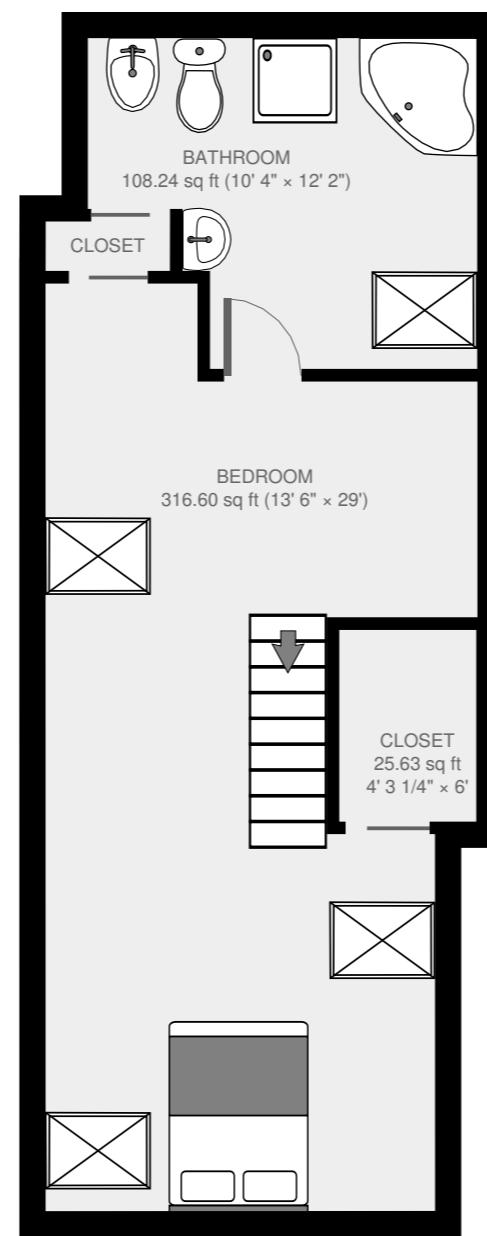
Width: 2' 5 1/4"
Length: 3' 1/2"
Area: 7.38 sq ft
Perimeter: 10' 11 1/4"





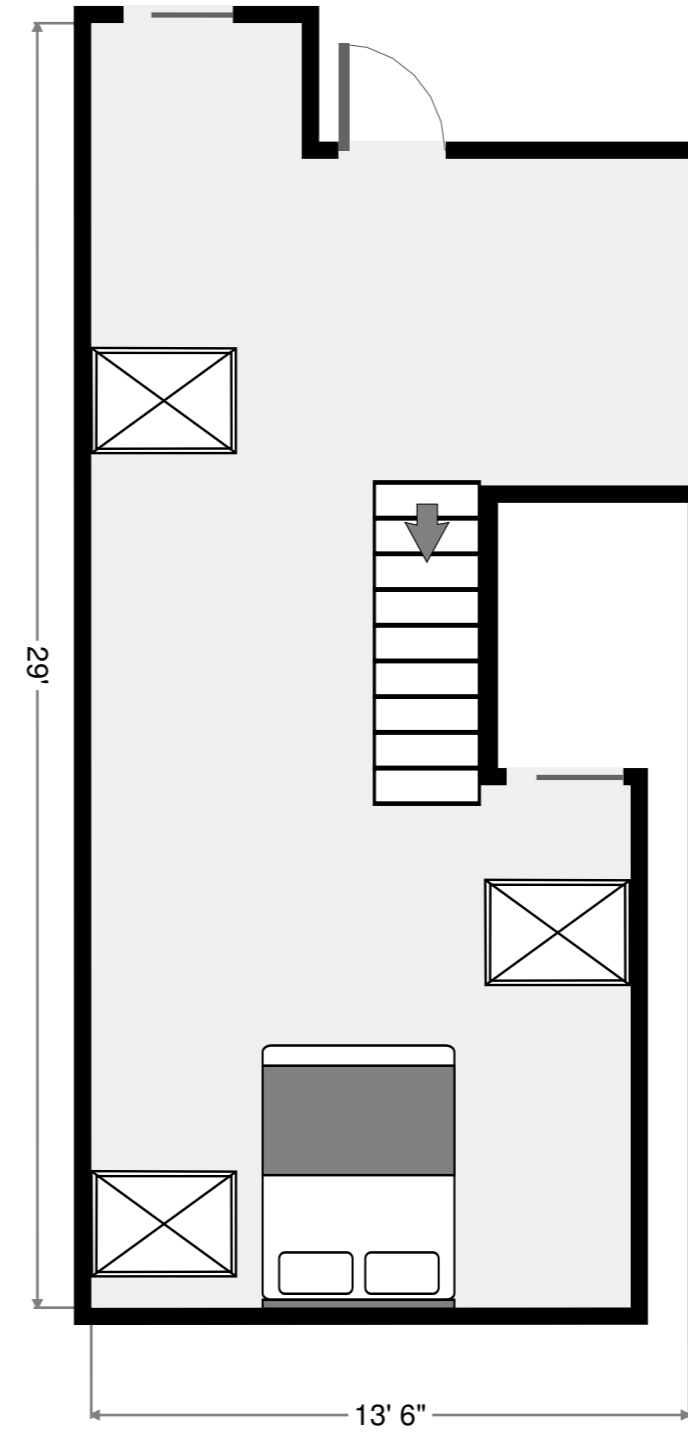
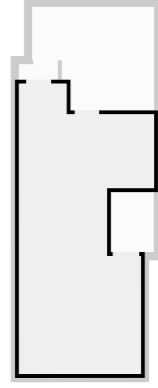
Lockstones
malmesbury@lockstones.co.uk
01666 338633
2016-05-23

3768 sq ft



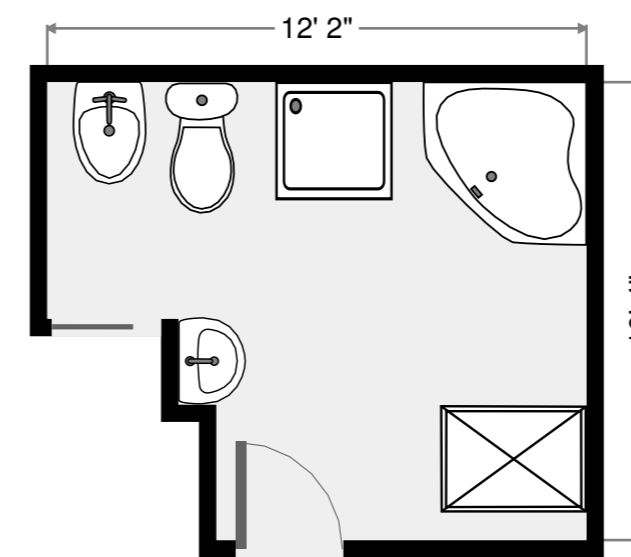
Bedroom

Width: 13' 6"
Length: 29'
Area: 316.60 sq ft
Perimeter: 91' 8 1/2"
Ceiling Height: 7' 1/2"



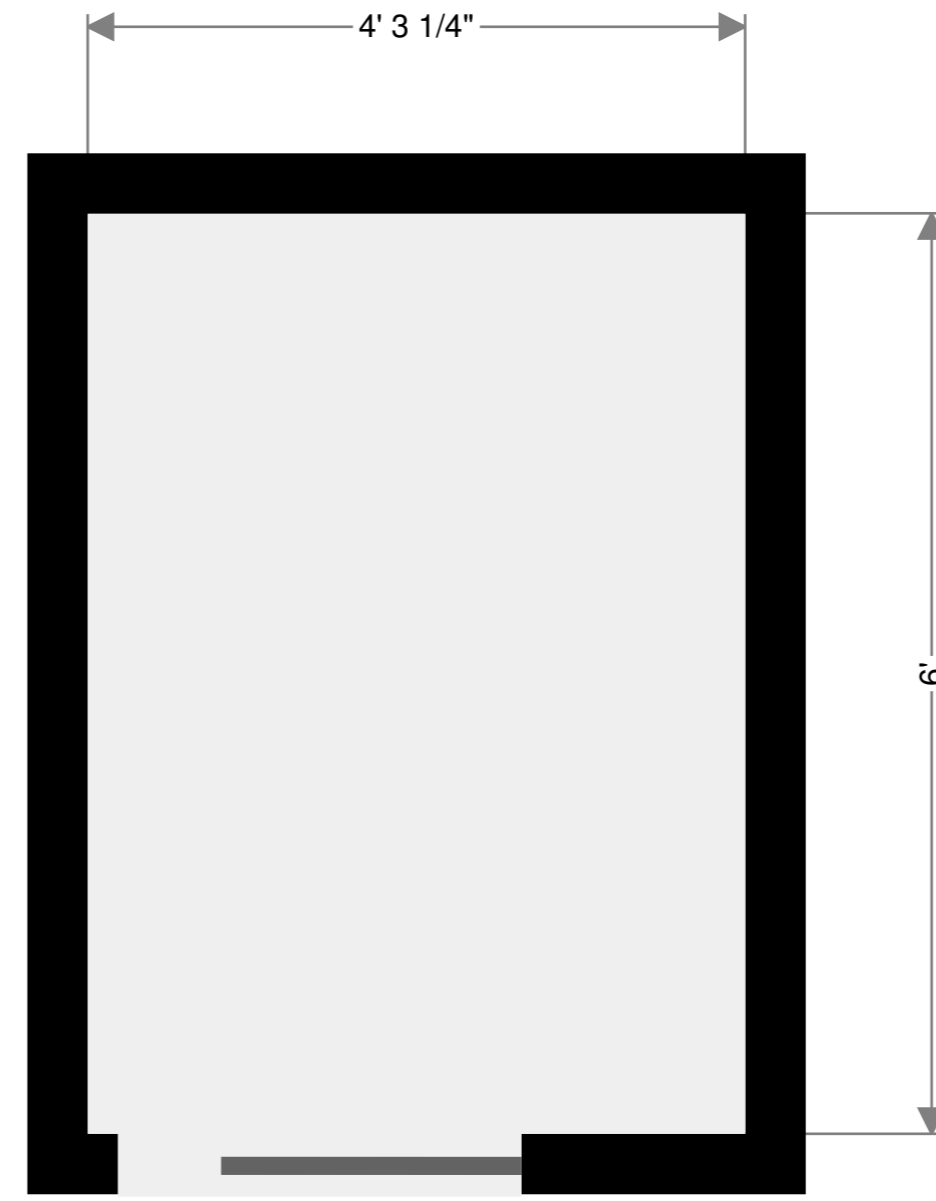
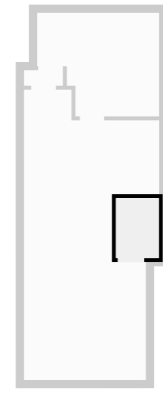
Bathroom

Width: 10' 4"
Length: 12' 2"
Area: 108.24 sq ft
Perimeter: 44' 11 3/4"
Ceiling Height: 7' 1/2"



Closet

Width: 4' 3 1/4"
Length: 6'
Area: 25.63 sq ft
Perimeter: 20' 6 1/2"



Closet

Width: 1' 6 1/2"
Length: 3' 10 1/2"
Area: 5.98 sq ft
Perimeter: 10' 10 1/4"

